

UPDATED 3/25/20

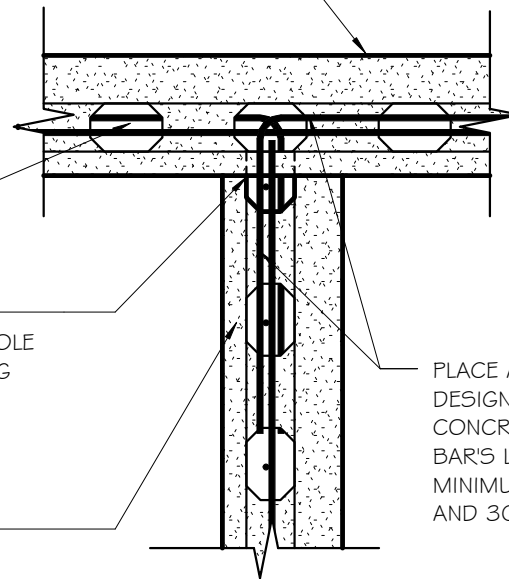
NOTE: THIS DETAIL MAY BE USED FOR THE INTERSECTION OF EITHER 8" OR 10" THICK ICCF WALLS. THE REINF BAR PLACEMENT IS IDENTICAL

ALTERNATE DIRECTION WITH EACH CORNER BAR WITH SUBSEQUENT BLOCK COURSES

CUT A 4" SEMI-CIRCLE HOLE IN THE TOP COURSE AND ANOTHER 4" SEMI-CIRCLE HOLE IN BOTTOM COURSE OF THE INTERSECTING WALL BLOCK TO MAKE A 4" DIA HOLE AT EACH HORIZONTAL CORE FOR CONCRETE FLOW FROM ONE WALL TO THE OTHER

10" ASYMMETRIC ICCF WALL

10" ASYMMETRIC ICCF WALL



PLACE A CORNER BAR IAW THE DESIGN IN THE HOLES CUT FOR CONCRETE FLOW. CORNER BAR'S LAP SPLICE SHALL BE A MINIMUM OF 24" FOR #4 REINF AND 30" FOR #5 REINF, TYPICAL

ICCF 10" ASYMMETRIC WALL " T " INTERSECTION

SCALE: 3/4" = 1'-0"

ECO FRIENDLY BLOCK
Research, Development,
& Technologies

"T " INTERSECTION

Project number	Project Number	A101
Date	Issue Date	
Drawn by	Author	
Checked by	Checker	
Scale 3/4" = 1'-0"		