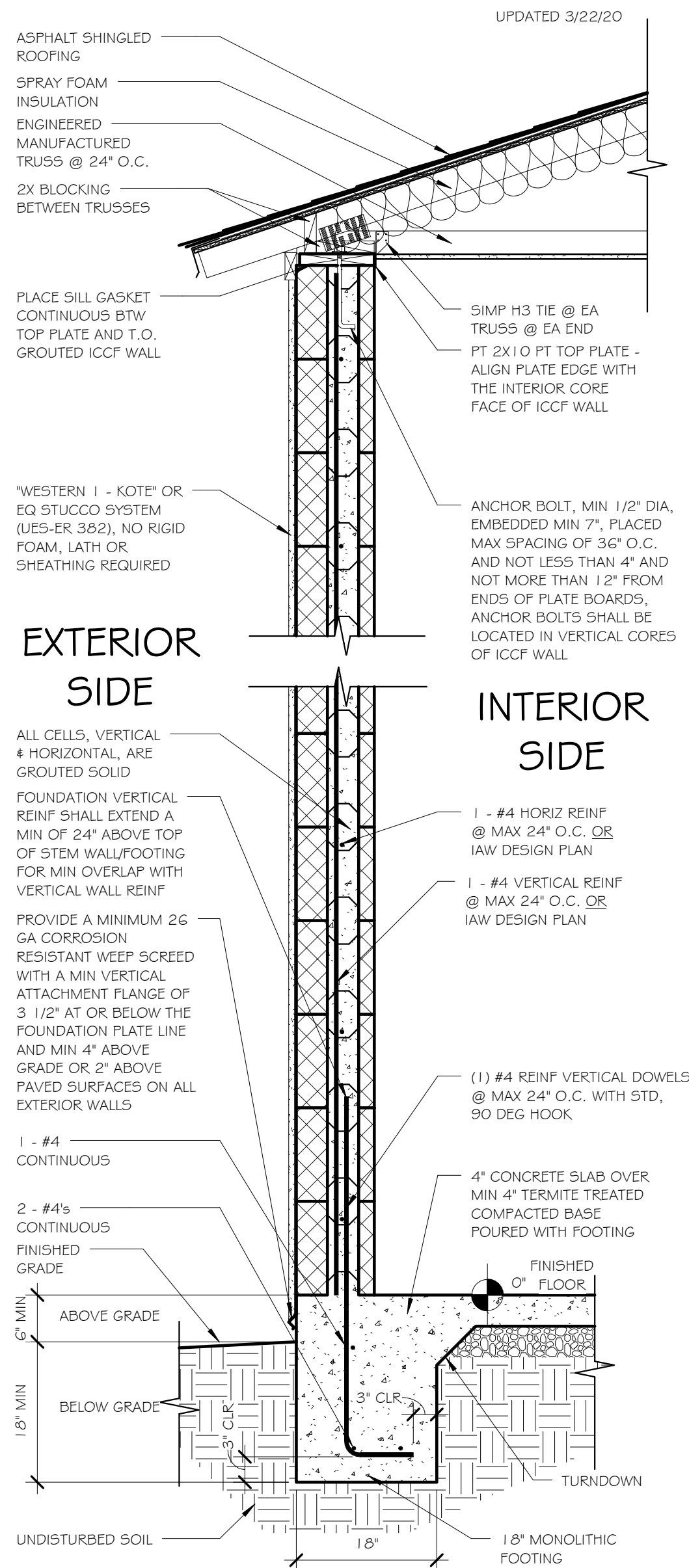
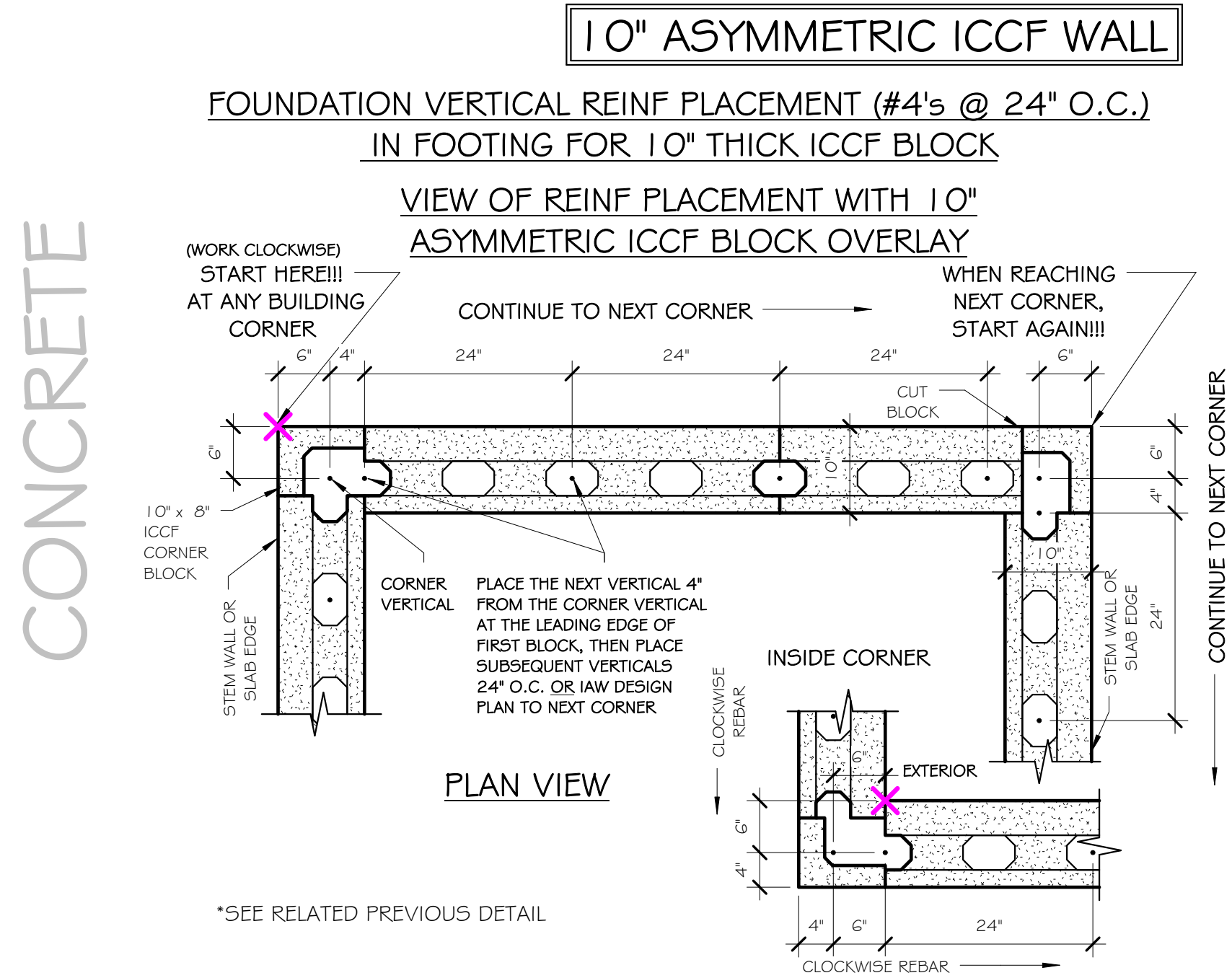


CONCRETE & ICCF WALL & FRAMING



10" ASYMMETRIC ICCF WALL

5 TYPICAL WALL SECTION - MONOLITHIC FTG/PITCHED
SCALE: 3/4" = 1'-0"



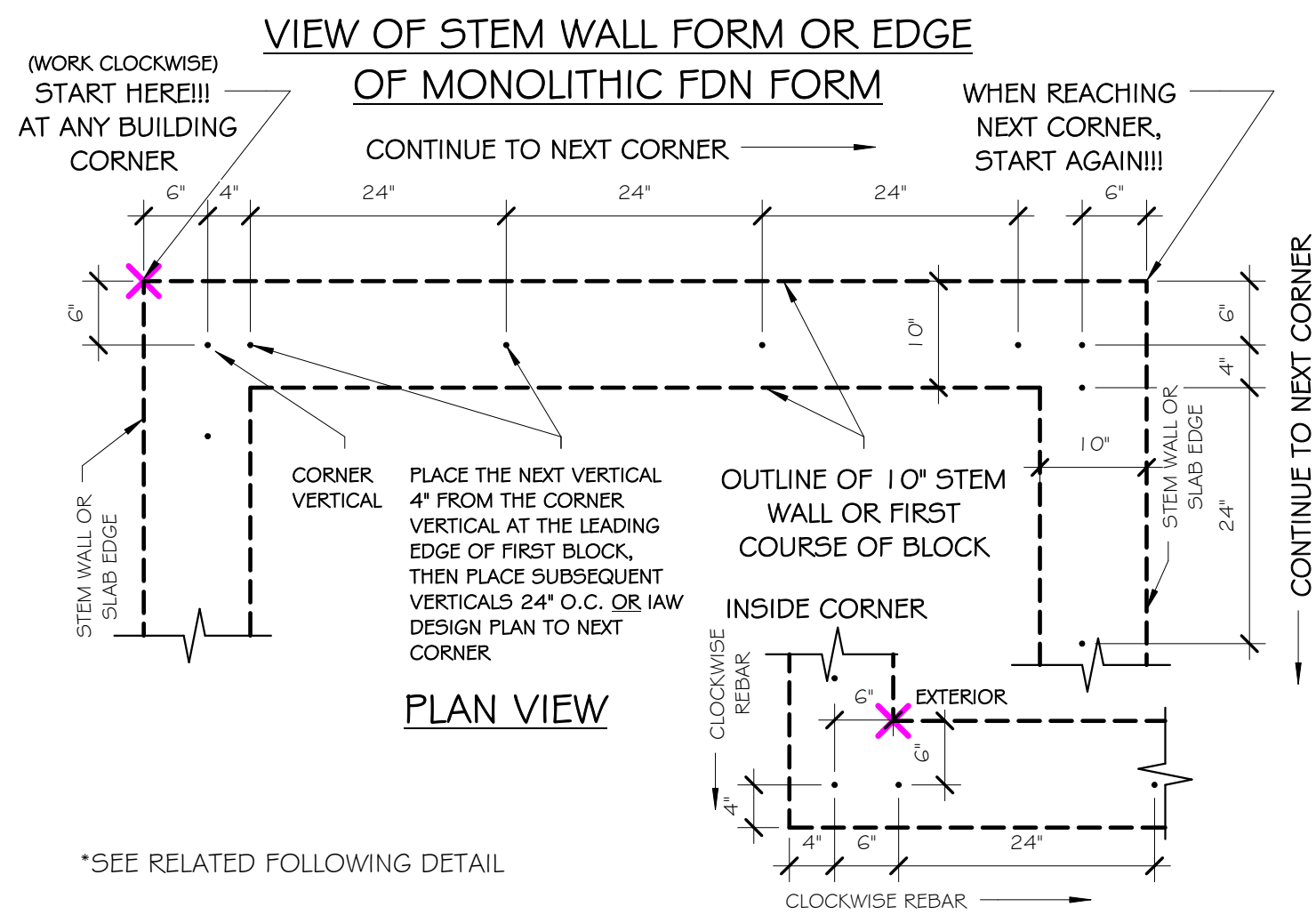
10" ASYMMETRIC ICCF WALL

4b FDN REINF PLACEMENT/10" BLK OVERLAY/24" O.C. (b) I
SCALE: 3/4" = 1'-0"

PRIOR TO FDN CONCRETE POUR: 10" ASYMMETRIC ICCF WALL
FOUNDATION VERTICAL REINF PLACEMENT (#4's @ 24" O.C.)
IN FOOTING FOR 10" THICK ICCF BLOCK

IMPORTANT NOTE TO STEELWORKERS:
1. FOUNDATION VERTICAL REINF PLACEMENT IS CRITICAL TO PROPER WALL BLOCK CORE ALIGNMENT.
2. ALL FDN VERTICAL REINF SHALL EXTEND A MIN OF 24" ABOVE T.O. STEM WALL OR T.O. SLAB ON A MONOLITHIC FDN FOR WALL REIN LAP SPICE.

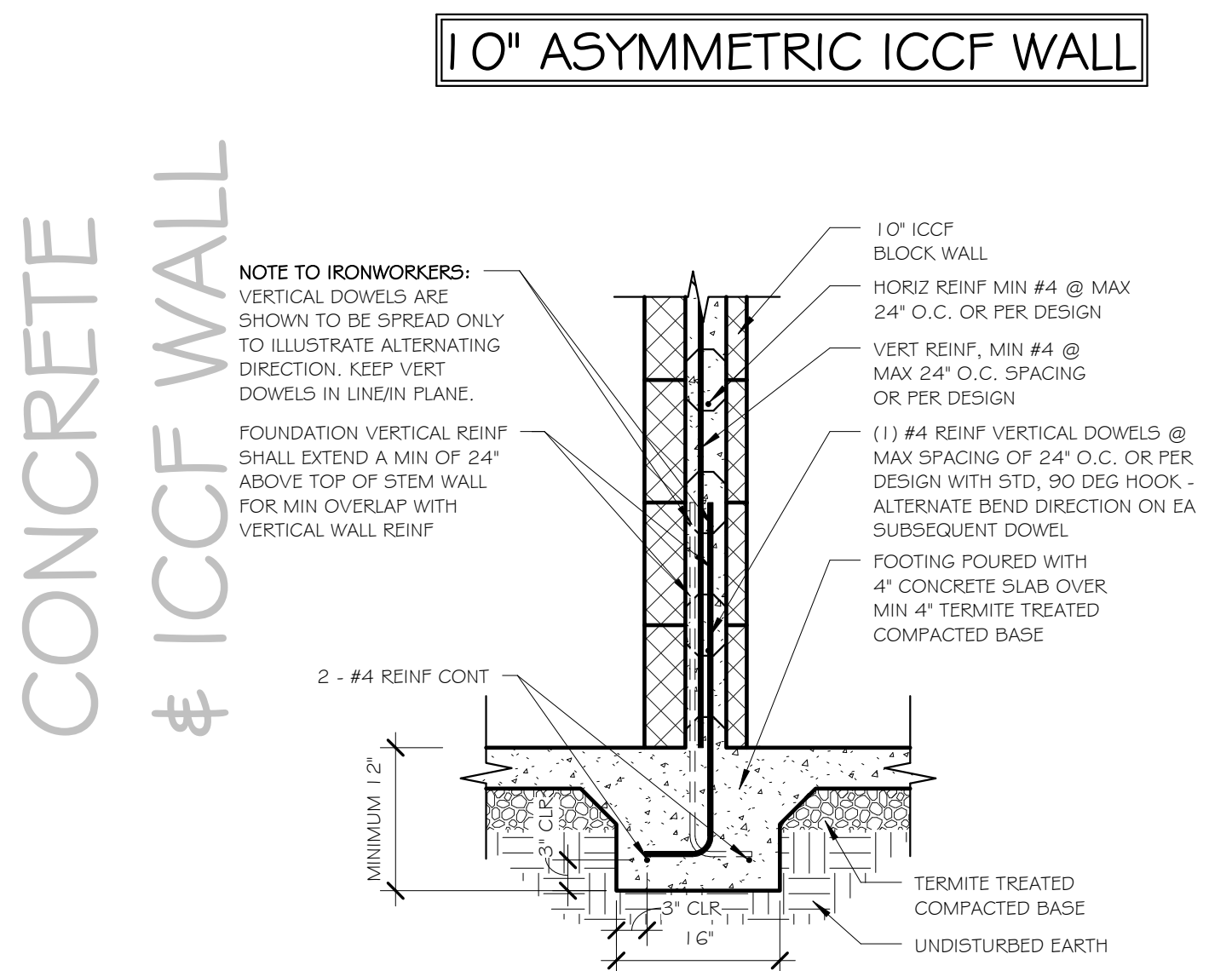
SUGGESTED STEEL PLACEMENT METHOD FOR 10" BLOCK/24" O.C.:
1. BEGIN AT ANY BUILDING CORNER. WORK CLOCKWISE.
2. PLACE FIRST CORNER VERTICAL REINF 6" FROM LEFT SLAB EDGE OR STEM WALL EXT FACE AND 6" FROM TOP SLAB EDGE OR STEM WALL EXT FACE (AS DEPICTED).
3. PLACE NEXT VERTICAL REINF @ 4" FROM FIRST VERTICAL (10" FROM SLAB EDGE), THEN PLACE ALL SUBSEQUENT VERTICALS @ 24" O.C. OR IAW DESIGN PLAN INTERVAL UNTIL REACHING THE NEXT CORNER.
4. BEGIN AGAIN AT NEXT CORNER.



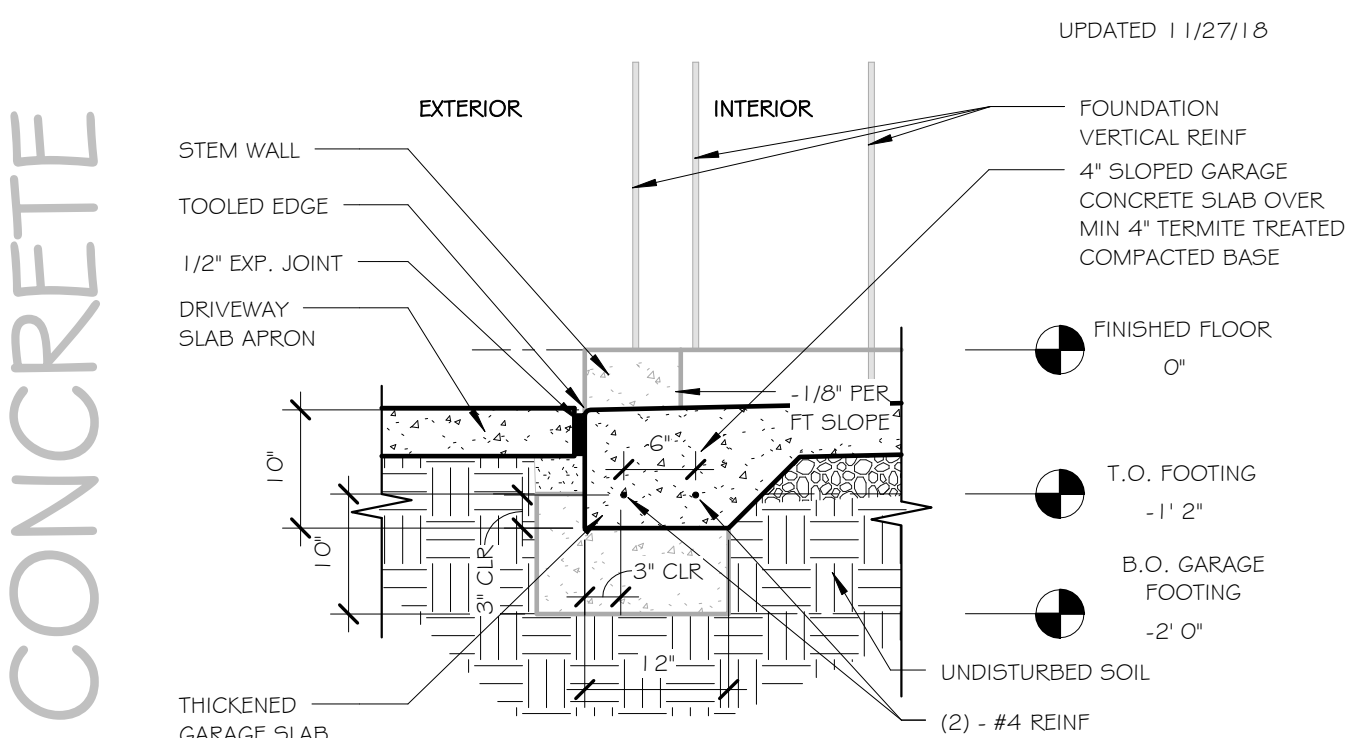
*SEE RELATED FOLLOWING DETAIL

4a FDN REINF PLACEMENT/10" ICCF WALL/24" O.C. (a)
SCALE: 3/4" = 1'-0"

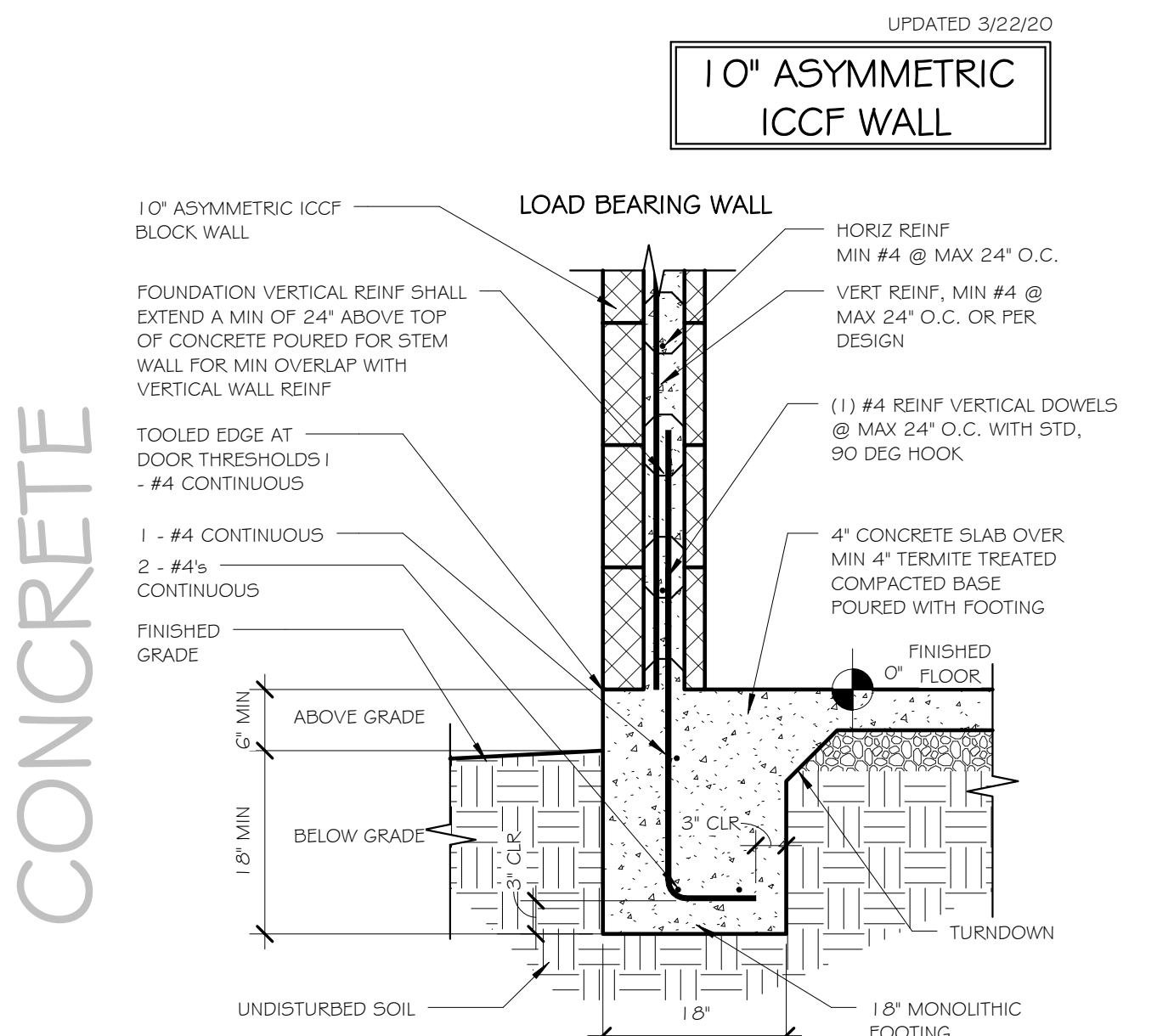
READ THESE 2 DETAILS TOGETHER



3 INTERIOR WALL FTG POURED WITH SLAB
SCALE: 3/4" = 1'-0"



2 SLAB EDGE TURNDOWN - GARAGE DOOR
SCALE: 3/4" = 1'-0"



1 MONOLITHIC FDN WITH 10" ASYM BLOCK
SCALE: 3/4" = 1'-0"



CUSTOM RESIDENCE FOR:
10" ASYMMETRIC
ICCF WALL CONSTRUCTION
- EXAMPLE DETAILS

REVISIONS		
NO.	DESCRIPTION	DATE
PROJECT NUMBER		
DATE		
DESIGNED BY		RET
DRAWN BY		RET
CHECKED BY		KRM
SHEET TITLE		
FDN DETAILS		
- 10" ASY/24OC		
MONOLITHIC		
SHEET NUMBER		
S3a		
SCALE: 3/4" = 1'-0"		