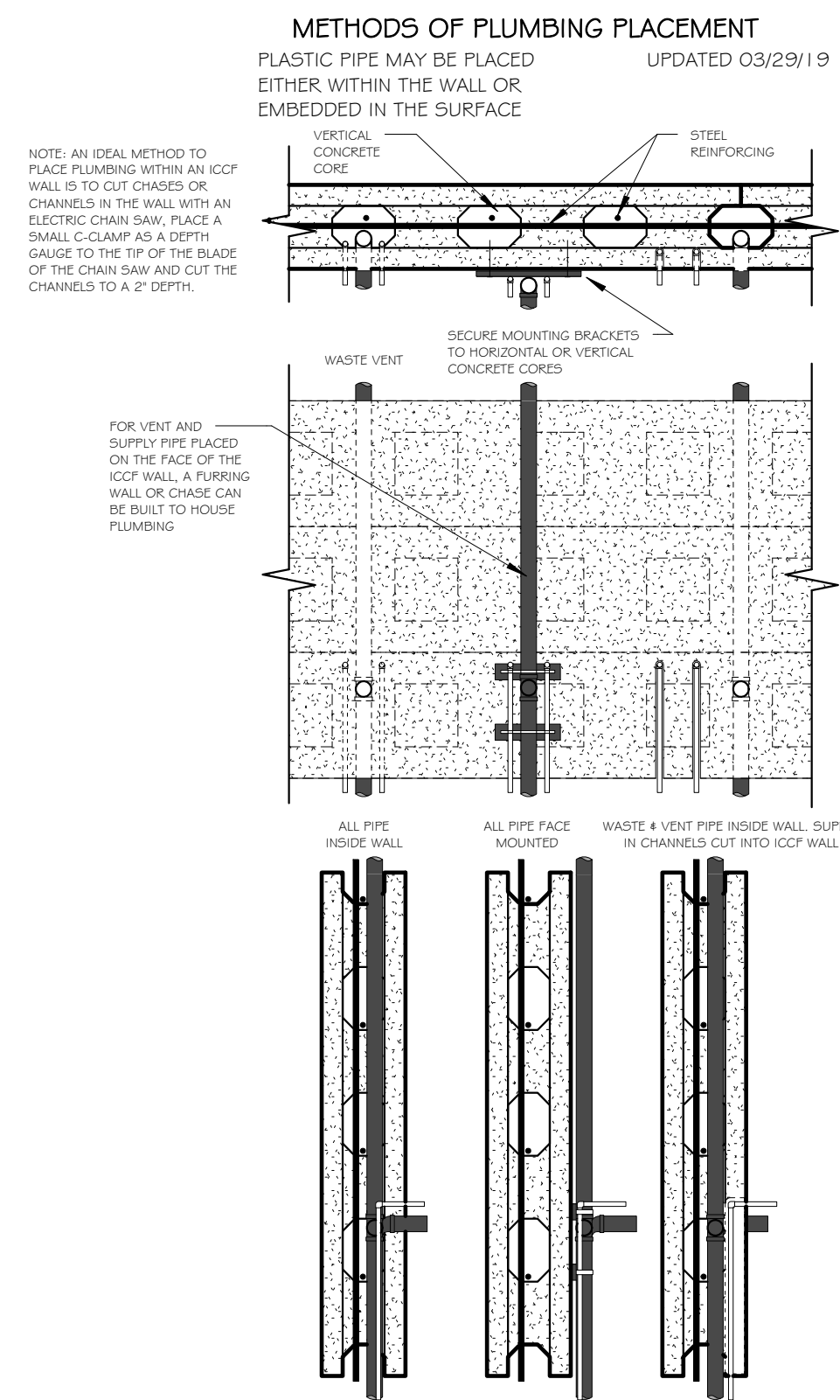
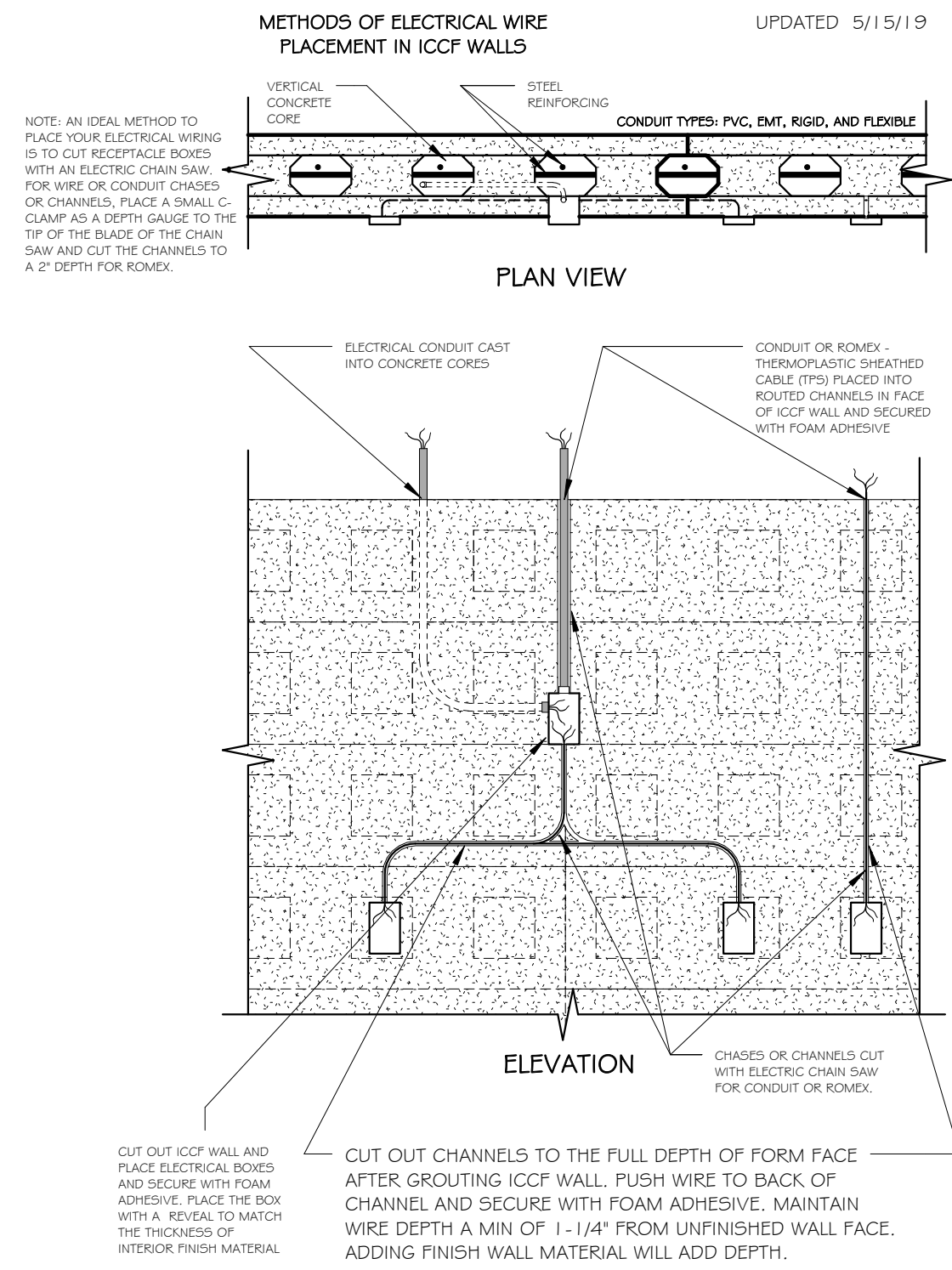


ELECTRICAL

8 ELECTRICAL PLACEMENT / ICCF WALL
SCALE: 3/4" = 1'-0"

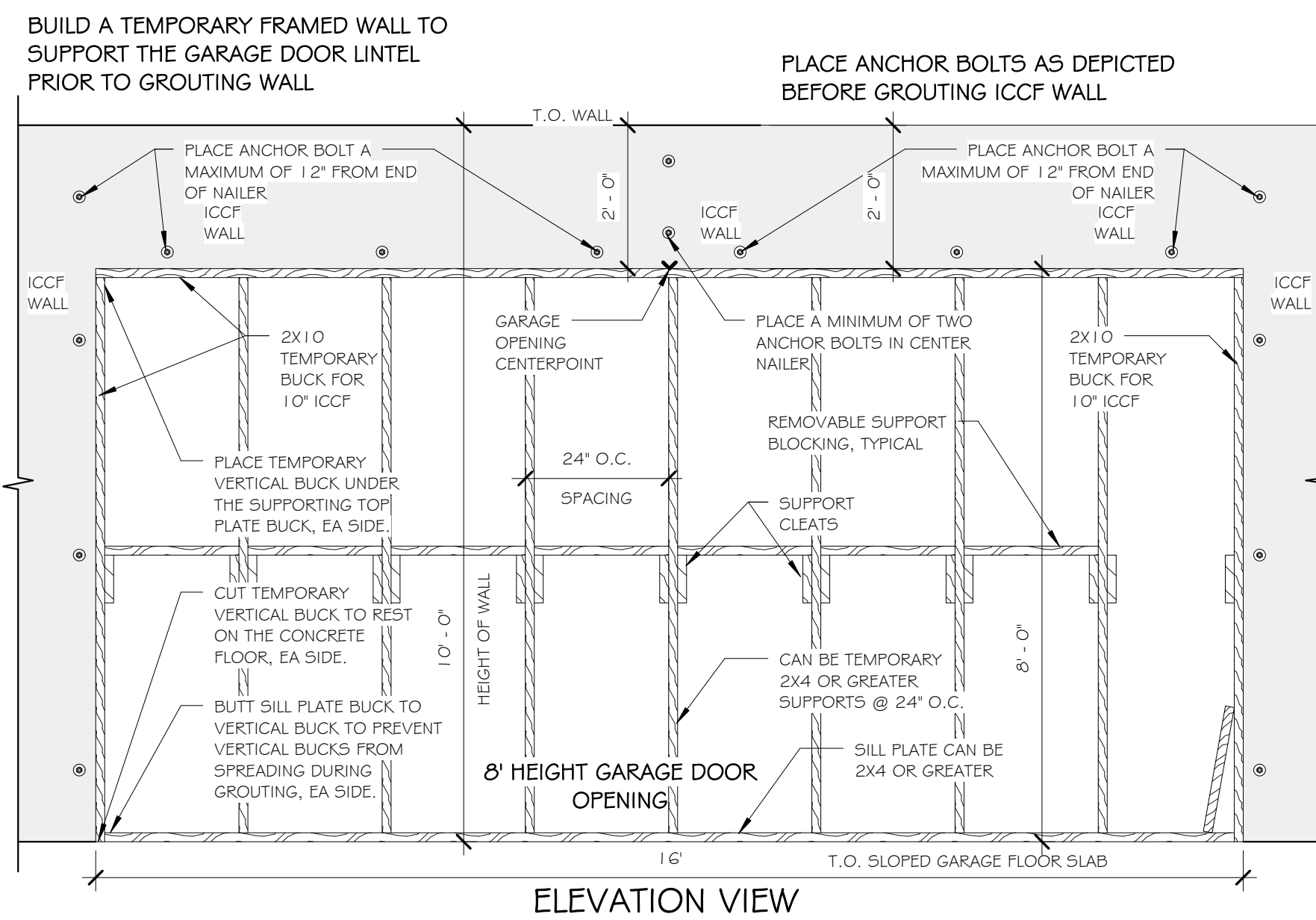
PLUMBING

7 PLUMBING PLACEMENT / ICCF WALL
SCALE: 3/4" = 1'-0"

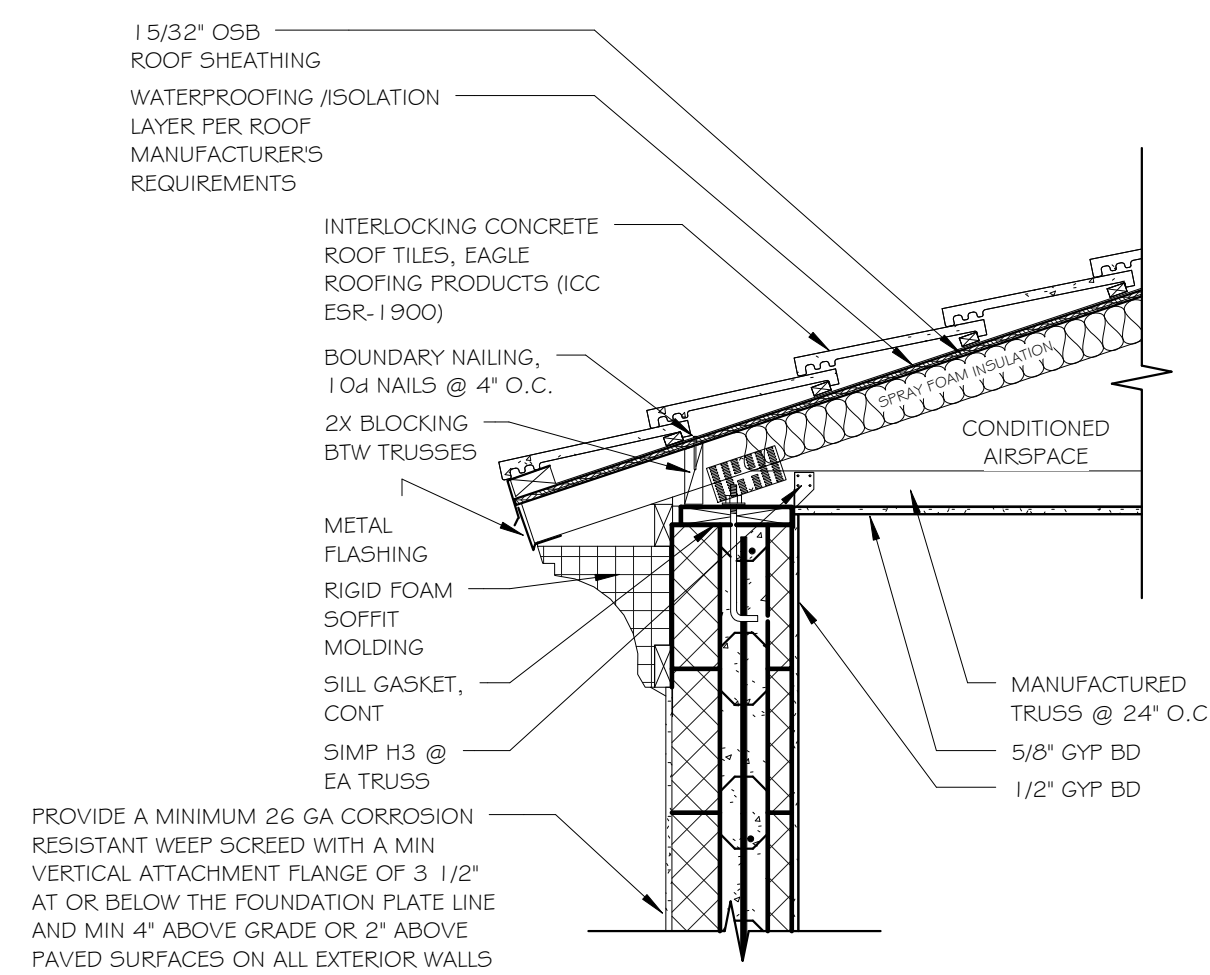


CONCRETE

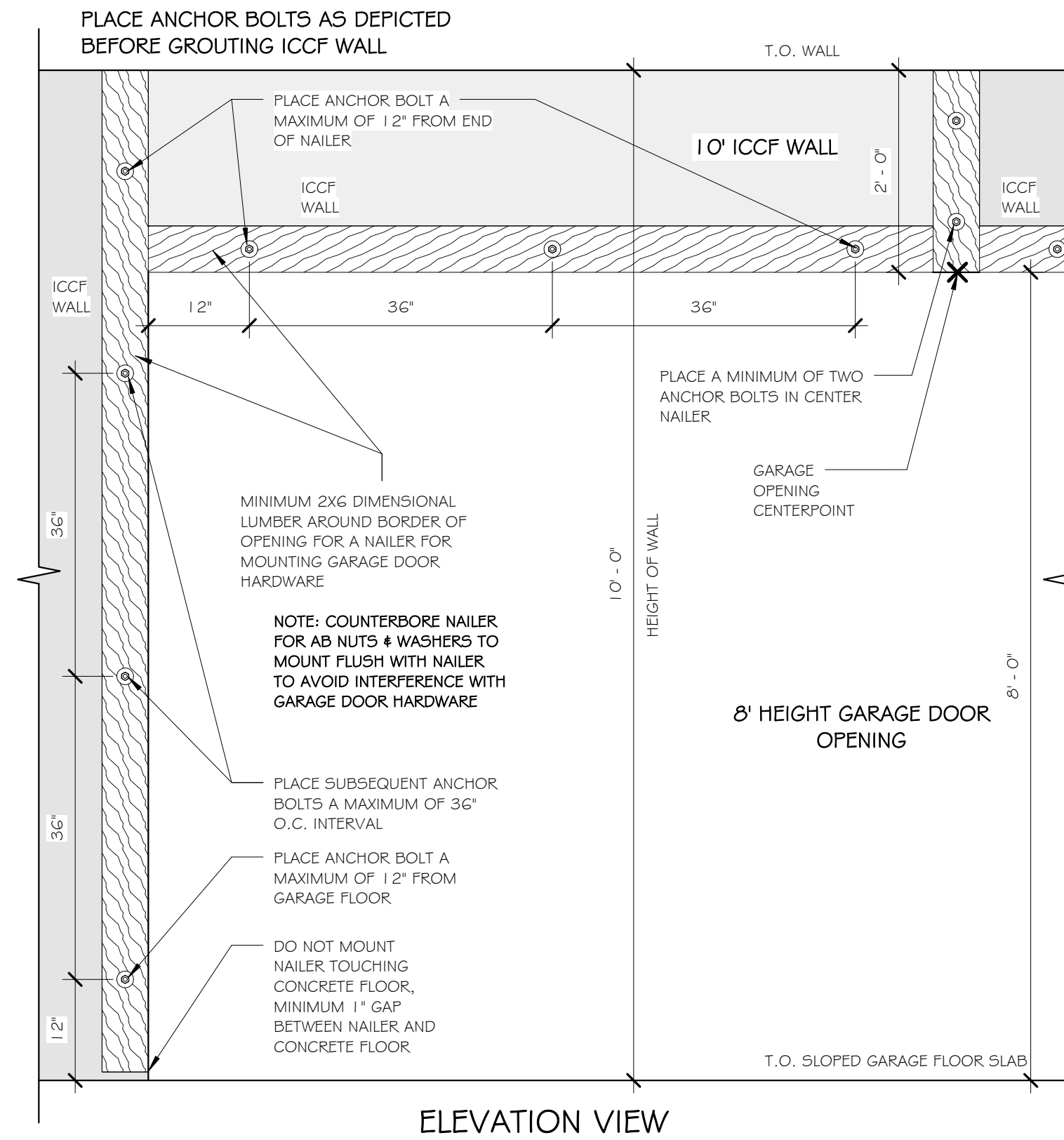
6 GARAGE DOOR NAILER INSTALLATION DETAIL



⑨ GARAGE DOOR OPENING - TEMPORARY BUCKS PRIOR TO GROUT
SCALE: 1/2" = 1'-0"

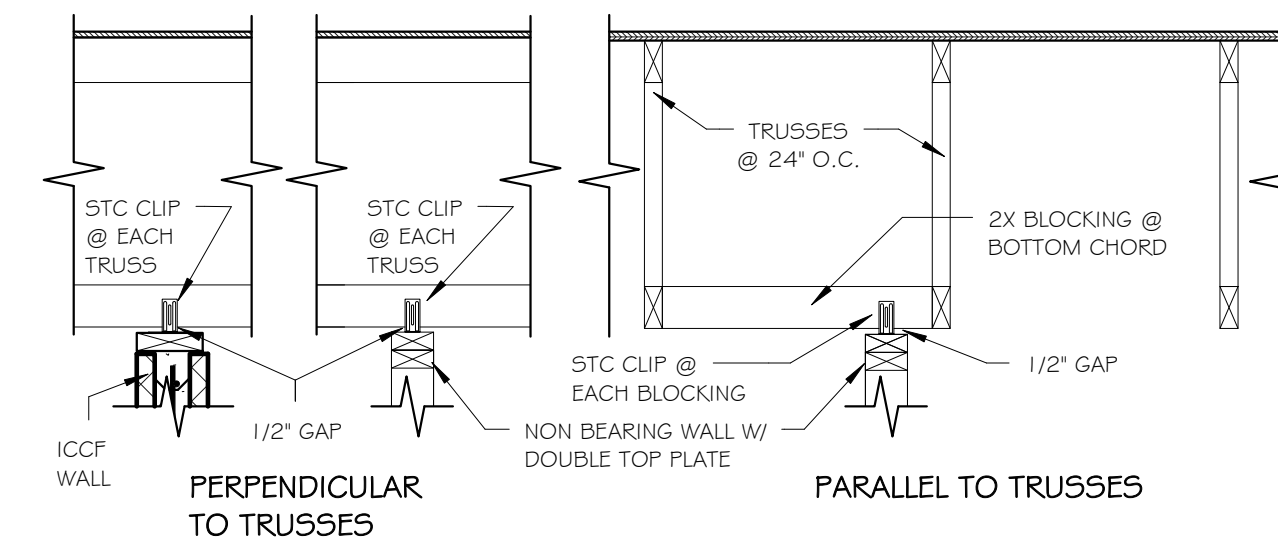


5 TRUSS TO WALL TOP PLATE (TILE)
SCALE: $3/4" = 1'-0"$



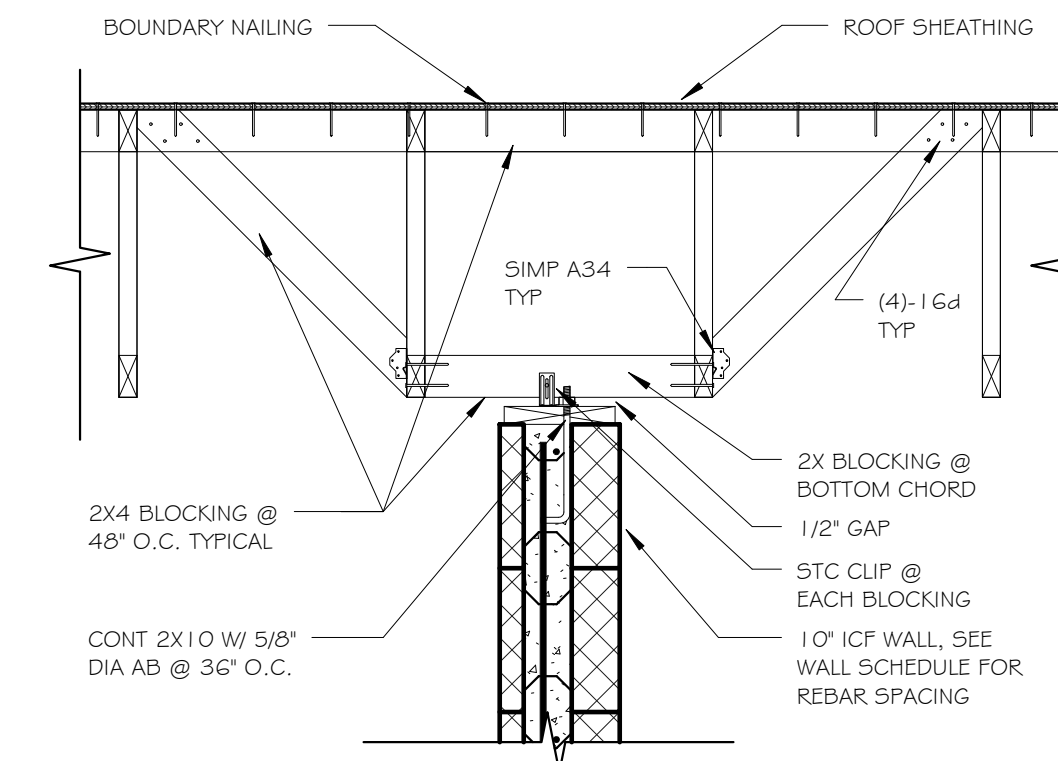
FRAMING

4 NON-LOAD BRG STUD OR ICCF WALL TO TRUSS
SCALE: 3/4" = 1'-0"



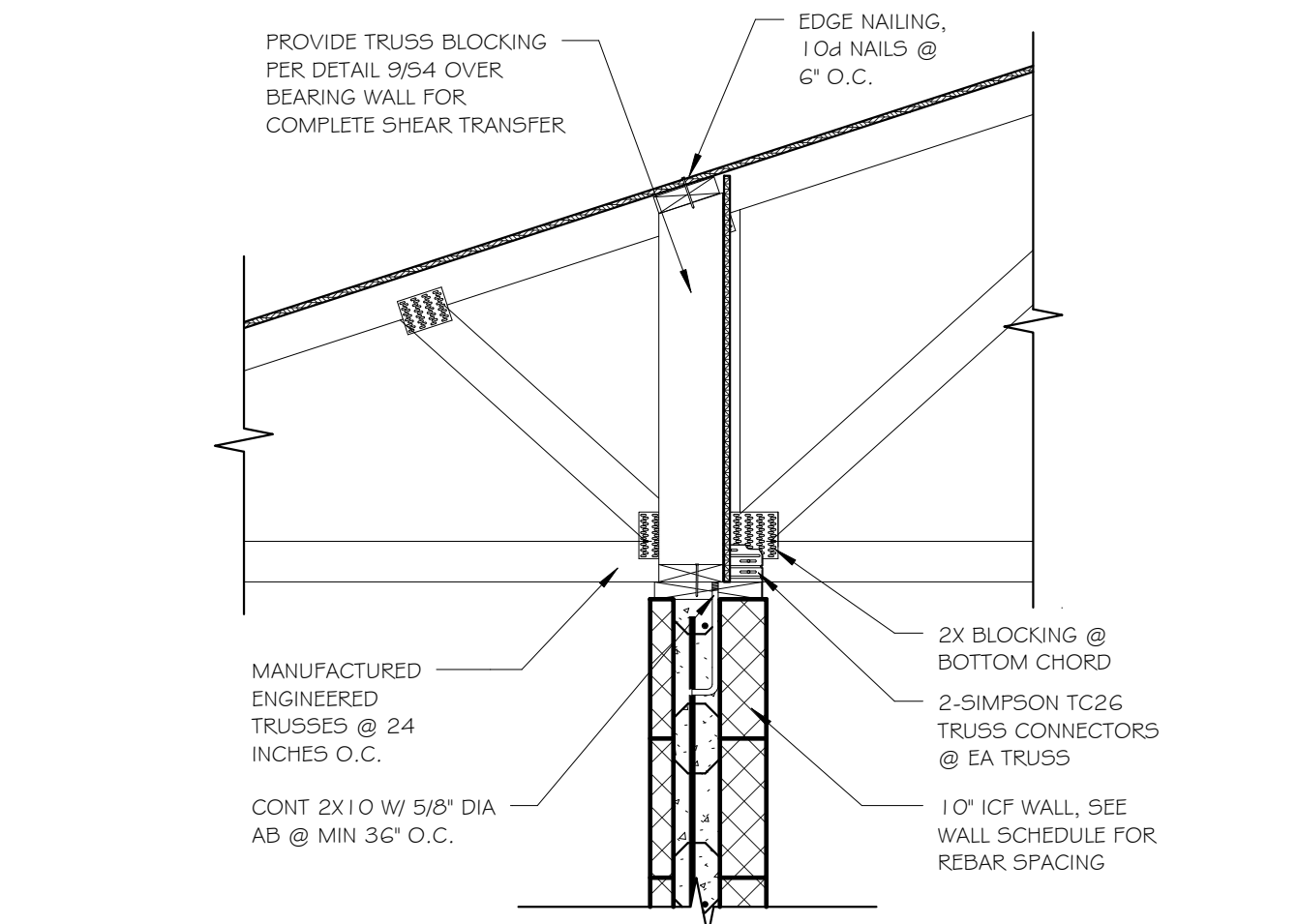
FRAMING

③ NON-BEARING ICCF WALL TO PARALLEL TRUSS



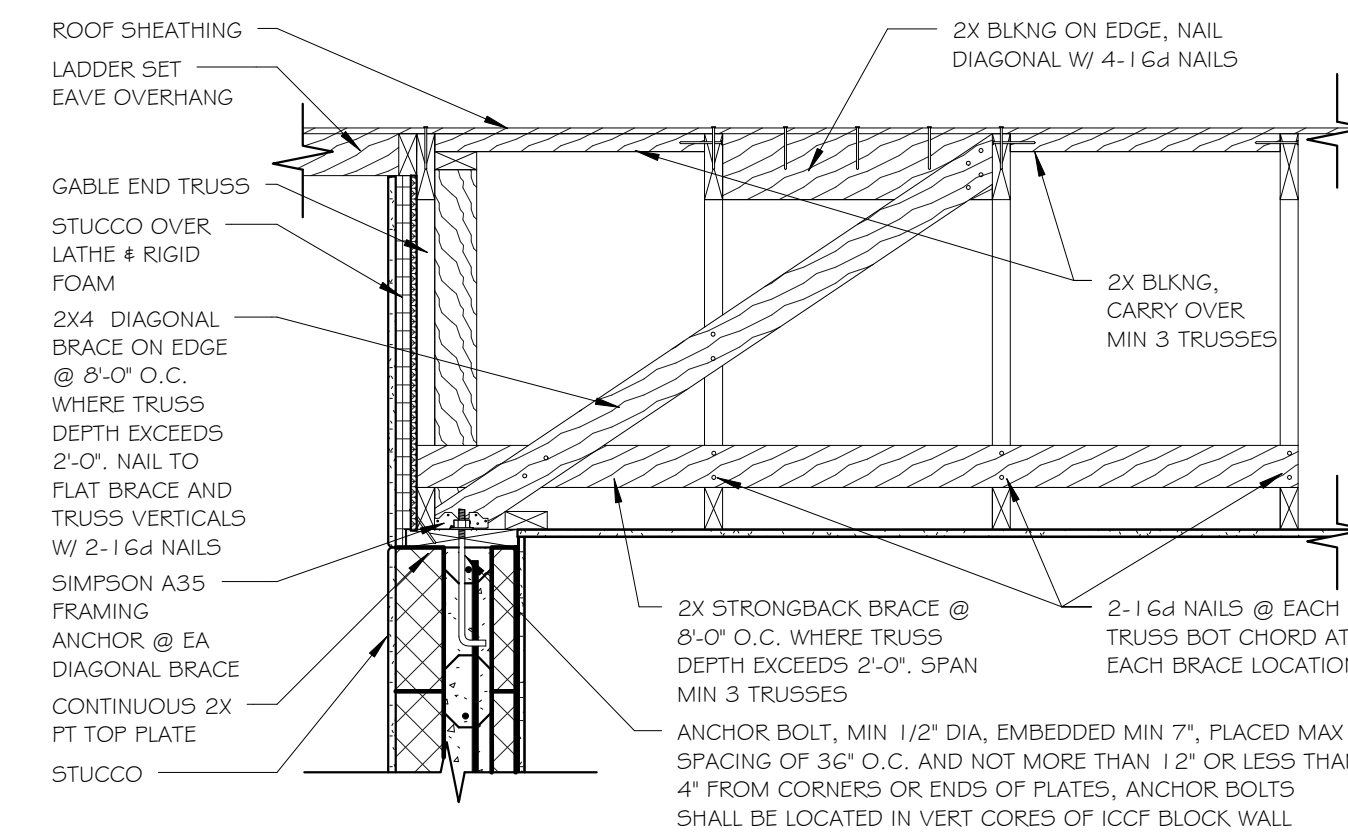
FRAMING

② BEARING ICCF WALL TO TRUSS
SCALE: 3/4" = 1'-0"



FRAMING

1 GABLE END TRUSS TO ICCF WALL
SCALE: $3/4" = 1'-0"$



10" ASYMMETRIC ICCF WALL CONSTRUCTION - EXAMPLE DETAILS

REVISIONS		
NO.	DESCRIPTION	DATE

PROJECT NUMBER	
DATE	
DESIGNED BY	RET
DRAWN BY	RET
CHECKED BY	KRM

SHEET TITLE

10" ASY ICCF
WALL DETAILS

SHEET NUMBER

S3c

SCALE: As indicated