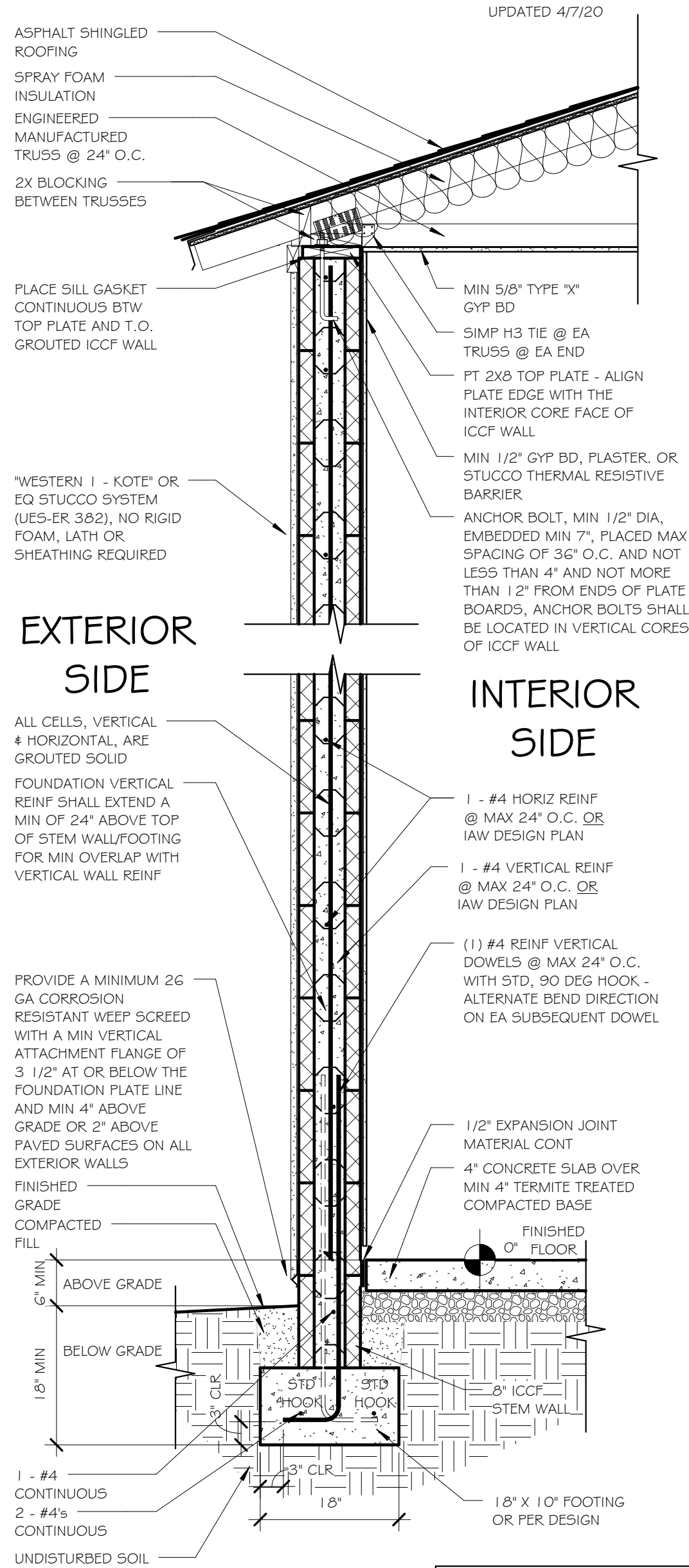
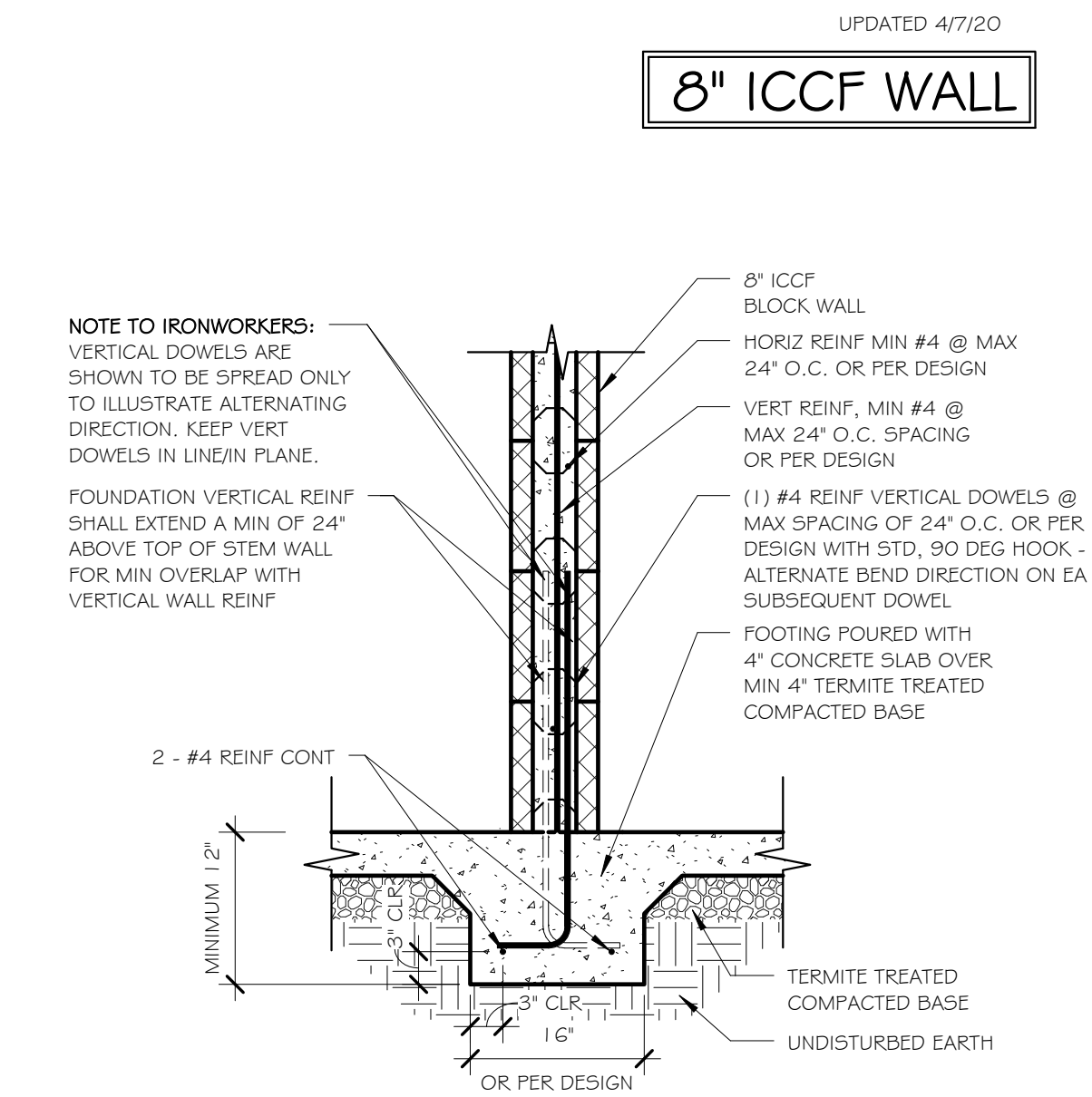


CONCRETE & ICCF WALL & FRAMING



8" ICCF WALL

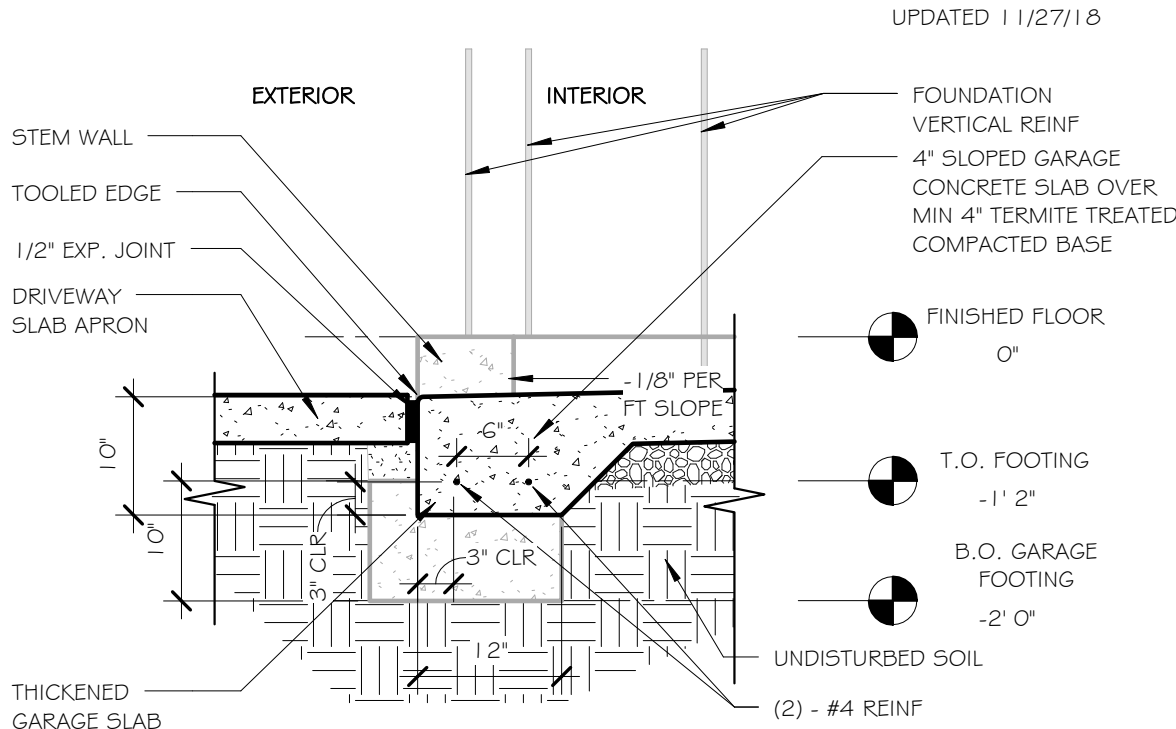
7 TYPICAL WALL SECTION - 8" ICCF - PITCHED ROOF/SHINGLE  
SCALE: 3/4" = 1'-0"



6 INTERIOR WALL FTG/10" 6"X6" CORE ICCF POURED WITH SLAB  
SCALE: 3/4" = 1'-0"

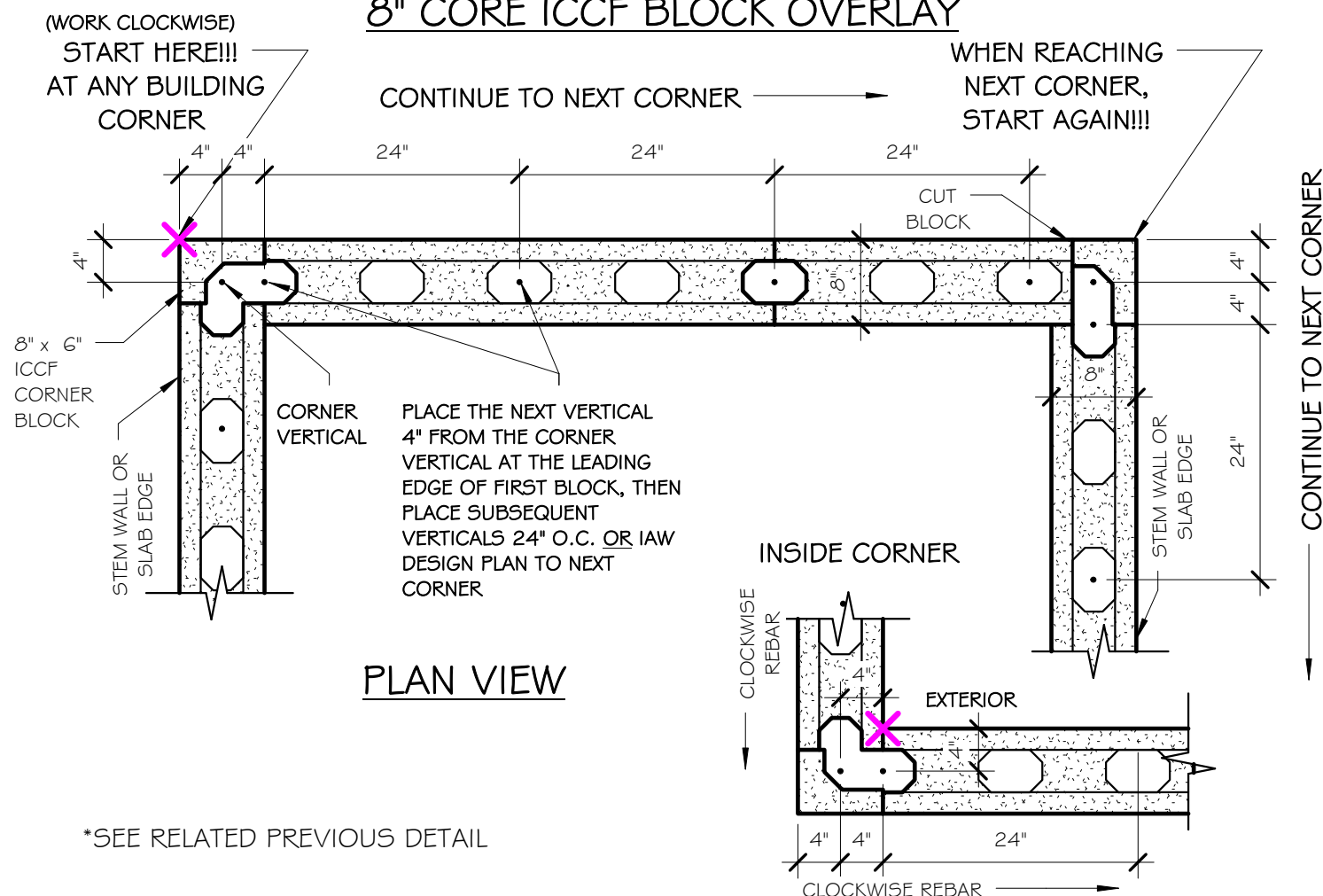
CONCRETE

5 SLAB EDGE TURNDOWN - GARAGE DOOR  
SCALE: 3/4" = 1'-0"



FOUNDATION VERTICAL REINF PLACEMENT (#4's @ 24" O.C.)  
IN FOOTING FOR 8" THICK ICCF BLOCK

TOP VIEW OF REINF PLACEMENT WITH  
8" CORE ICCF BLOCK OVERLAY



4b FDN REINF PLACEMENT/8" BLOCK OVERLAY/24" O.C. (b)  
SCALE: 3/4" = 1'-0"

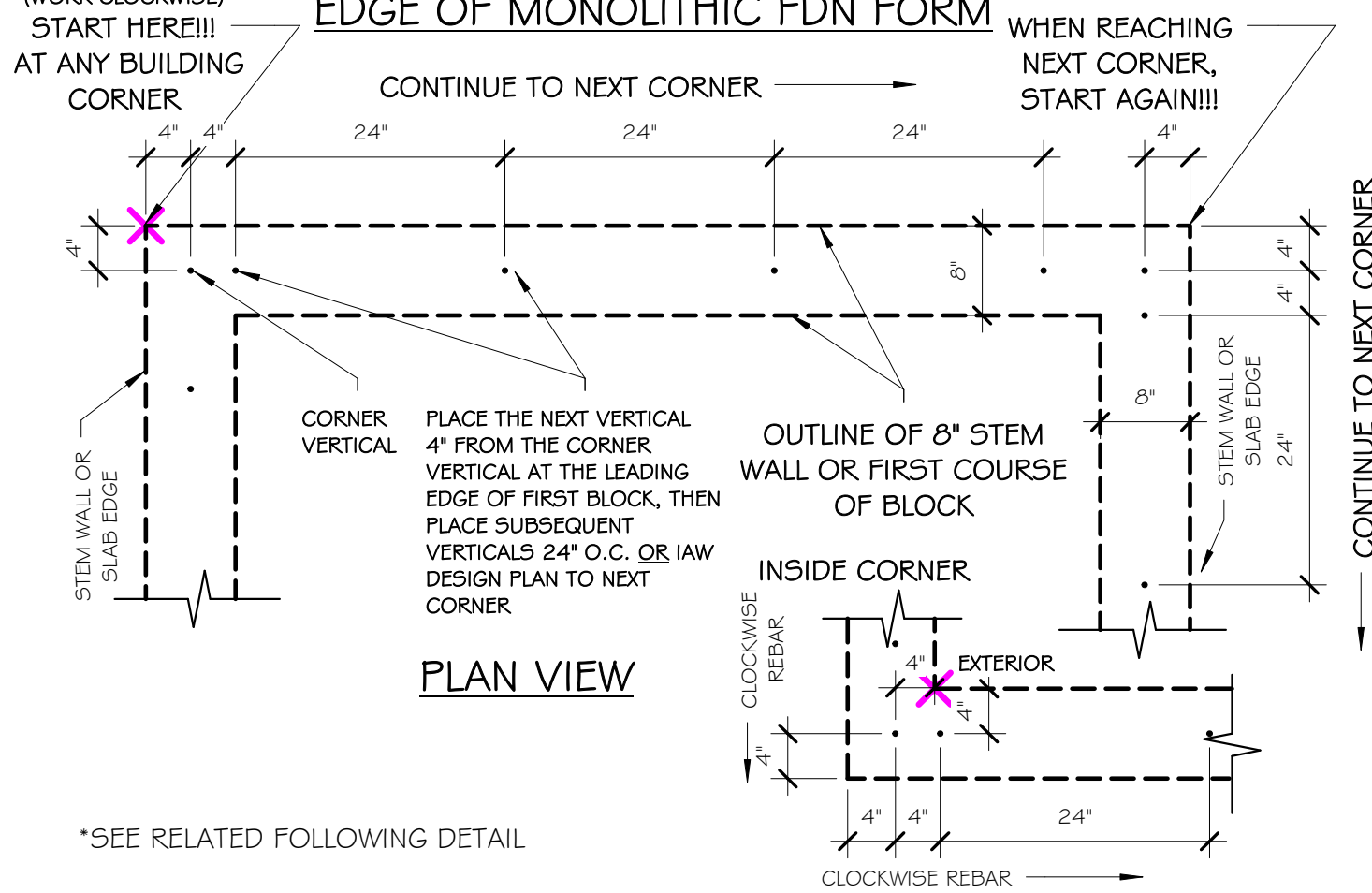
PRIOR TO FDN CONCRETE POUR:

FOUNDATION VERTICAL REINF PLACEMENT (#4's @ 24" O.C.)  
IN FOOTING FOR 8" THICK ICCF BLOCK

IMPORTANT NOTE TO STEELWORKERS:  
1. FOUNDATION VERTICAL REINF PLACEMENT IS CRITICAL TO PROPER WALL BLOCK CORE ALIGNMENT.  
2. ALL FDN VERTICAL REINF SHALL EXTEND A MIN OF 24" ABOVE T.O. STEM WALL OR T.O. SLAB ON A MONOLITHIC FDN FOR WALL REINF LAP SPICE.

SUGGESTED STEEL PLACEMENT METHOD FOR 8" BLOCK/24" O.C.:  
1. BEGIN AT ANY BUILDING CORNER, WORK CLOCKWISE.  
2. PLACE FIRST CORNER VERTICAL REINF 4" FROM LEFT SLAB EDGE OR STEM WALL EXT FACE AND 4" FROM TOP SLAB EDGE OR STEM WALL EXT FACE (AS DEPICTED).  
3. PLACE NEXT VERTICAL REINF @ 4" FROM FIRST VERTICAL (8" FROM SLAB EDGE), THEN PLACE ALL SUBSEQUENT VERTICALS @ 24" O.C. OR IAW DESIGN PLAN INTERVAL UNTIL REACHING THE NEXT CORNER.  
4. BEGIN AGAIN AT NEXT CORNER.

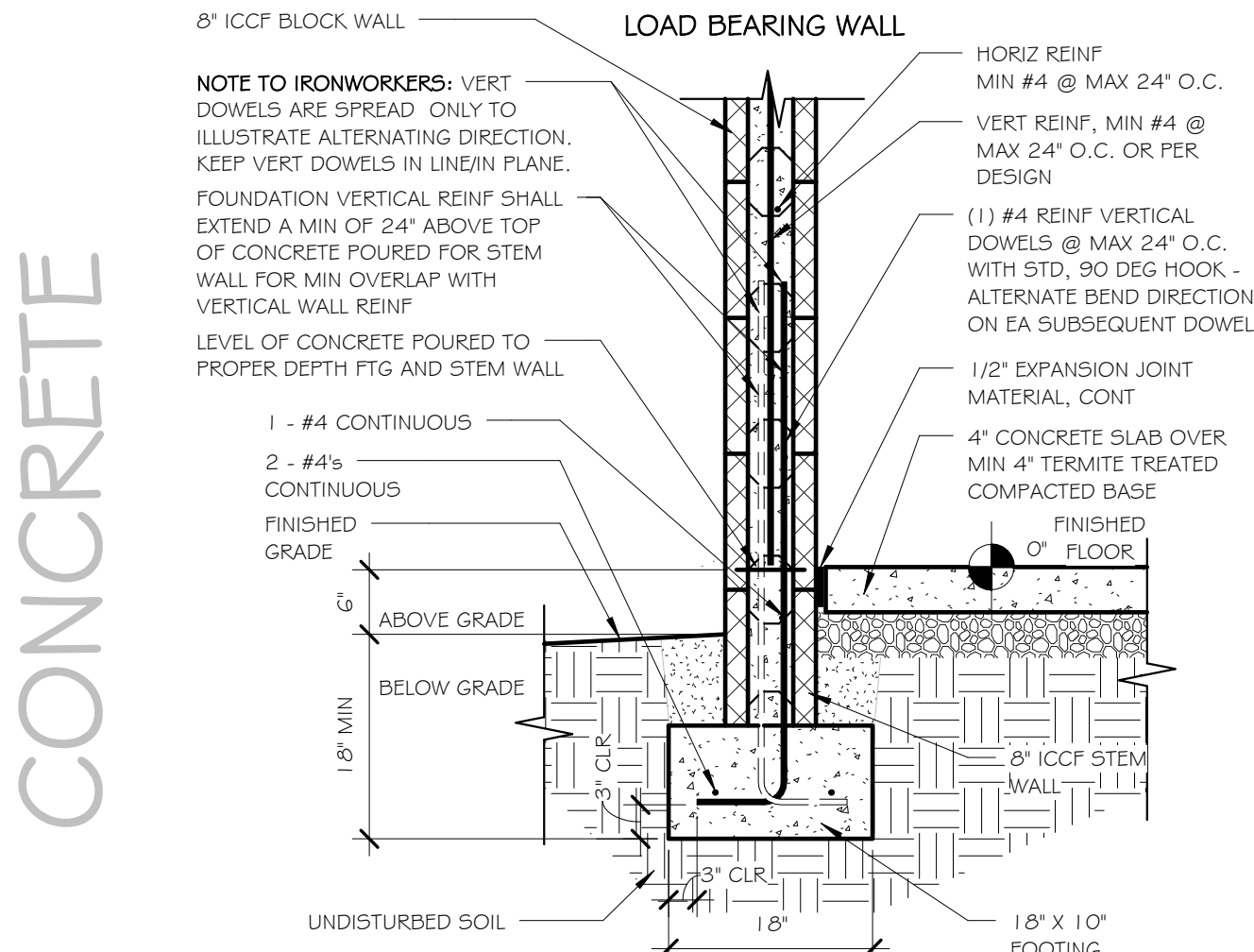
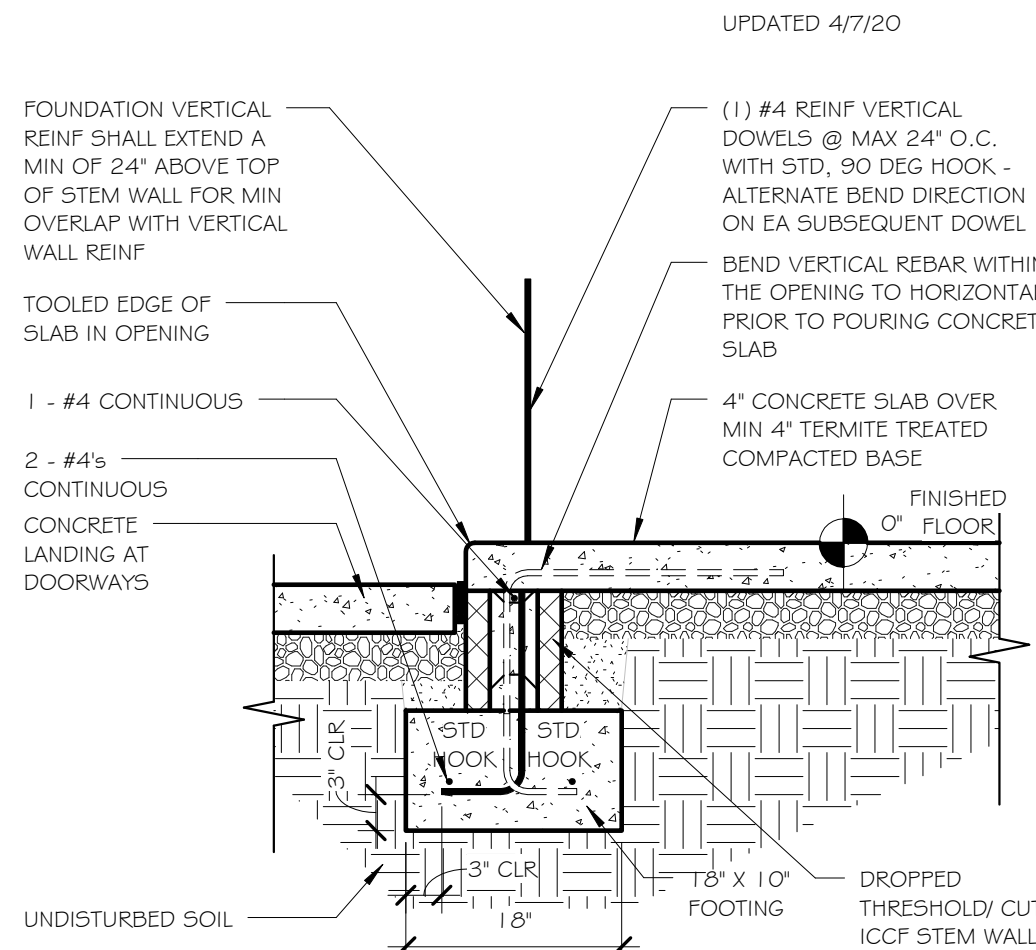
VIEW OF TOP OF STEM WALL FORM OR  
EDGE OF MONOLITHIC FDN FORM



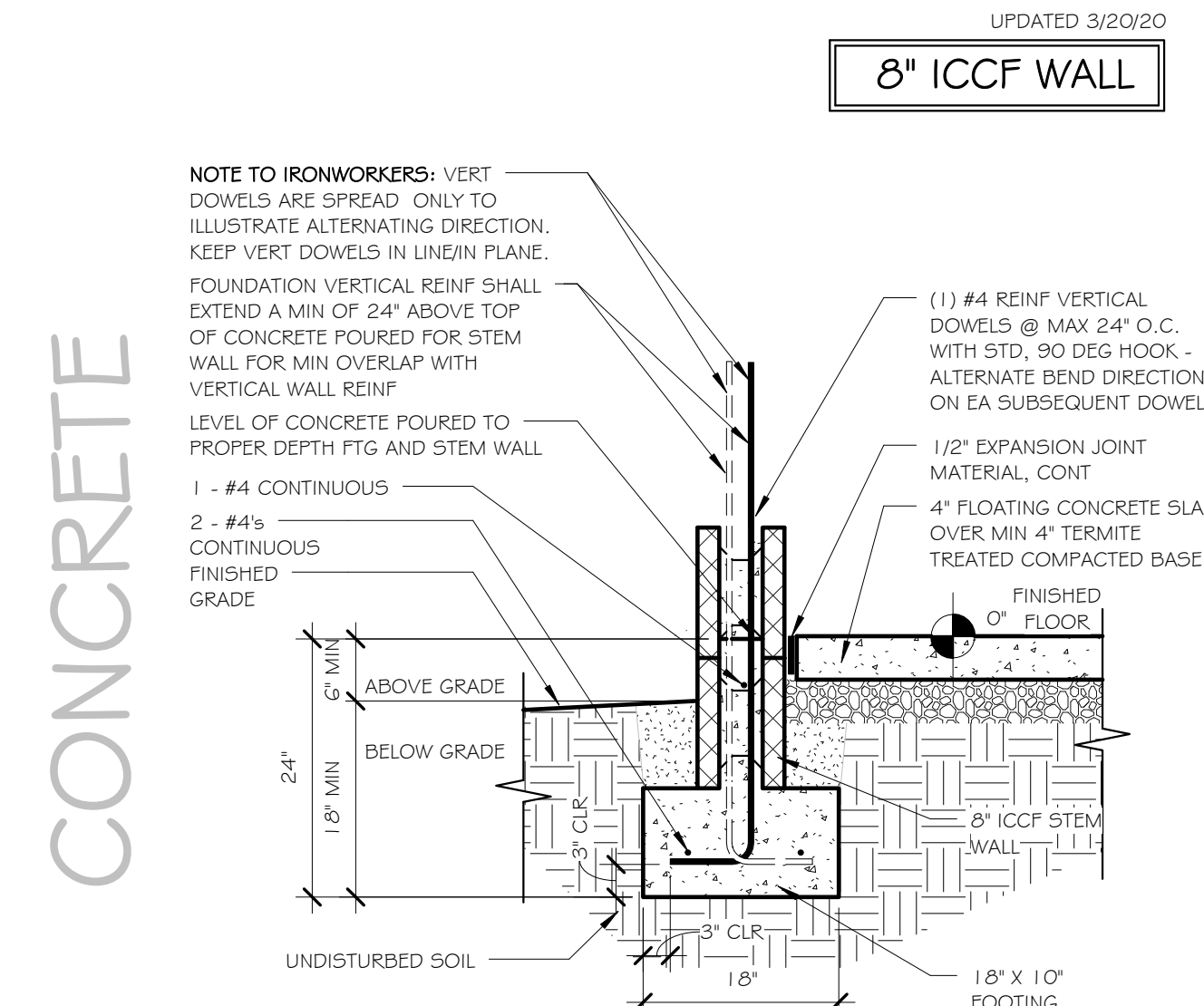
4a FDN REINF PLACEMENT/8" ICCF WALL/24" O.C. (a)  
SCALE: 3/4" = 1'-0"

CONCRETE

3 FDN 8" ICCF STEM WALL/DROPPED THRESHOLD  
SCALE: 3/4" = 1'-0"



2 FDN FTG WITH 8" ICCF WALL  
SCALE: 3/4" = 1'-0"



1 FDN FTG WITH 8" ICCF STEM WALL  
SCALE: 3/4" = 1'-0"



8" ICCF STEM WALL  
ICCF WALL CONSTRUCTION  
- EXAMPLE DETAILS

CUSTOM RESIDENCE FOR:

REVISIONS		
NO.	DESCRIPTION	DATE
PROJECT NUMBER		
DATE		
DESIGNED BY		
DRAWN BY		
CHECKED BY		
SHEET TITLE		
FDN DETAILS - 8" ICCF		
SHEET NUMBER		
S3a		
SCALE: 3/4" = 1'-0"		