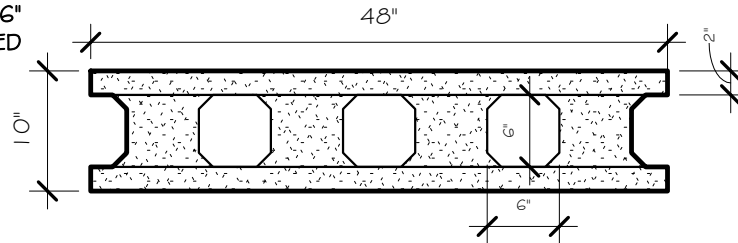
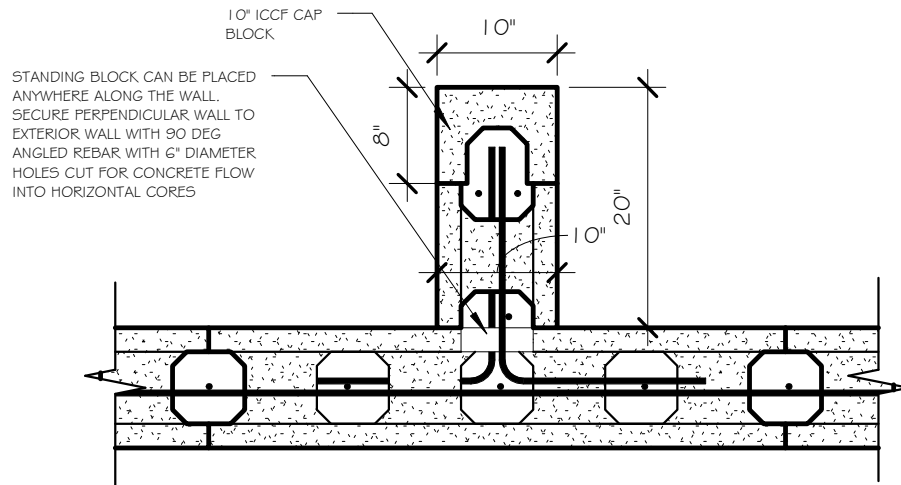


THIS IS AN INEXPENSIVE AND LABOR SAVING
METHOD TO ENHANCE STRUCTURAL STRENGTH
OF AN ICCF WALL BY ADDING A SHORT
PERPENDICULER WALL WITHOUT COMPLEX ICCF
BLOCK MODIFICATION

PLAN VIEW , 10 INCH 6"x6"
CORE BLOCK, UNMODIFIED



PERPENDICULAR WALL USING STANDING 10"
6"x6" CORE ICCF BLOCKS AND 10" ICCF CAP
BLOCKS



STRUCTURAL PERPENDICULAR WALL DESIGN

SCALE: 3/4" = 1'-0"

ECO FRIENDLY BLOCK
Research, Development,
& Technologies

10" 6x6 CORE
PERPENDICULAR
WALL STIFFENER

WALL STIFFENER

Project number 2018102118-001

Date 10/21/18

Drawn by Author

Checked by Checker

A105

Scale 3/4" = 1'-0"