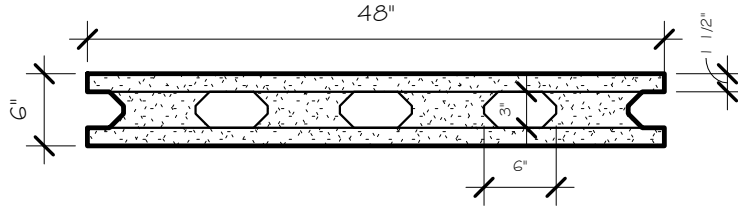
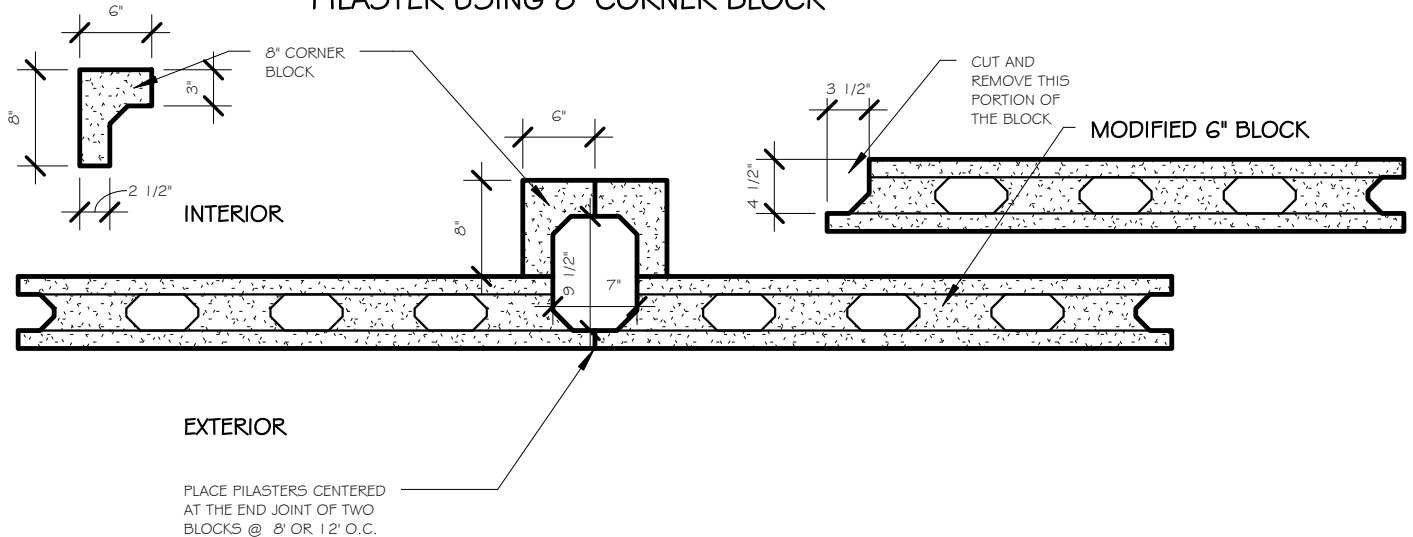


THIS IS AN INEXPENSIVE AND LABOR SAVING METHOD  
TO ENHANCE STRUCTURAL STRENGTH OF AN ICCF WALL  
BY ADDING POURED CONCRETE COLUMNS WITHOUT  
COMPLEX ICCF BLOCK MODIFICATION

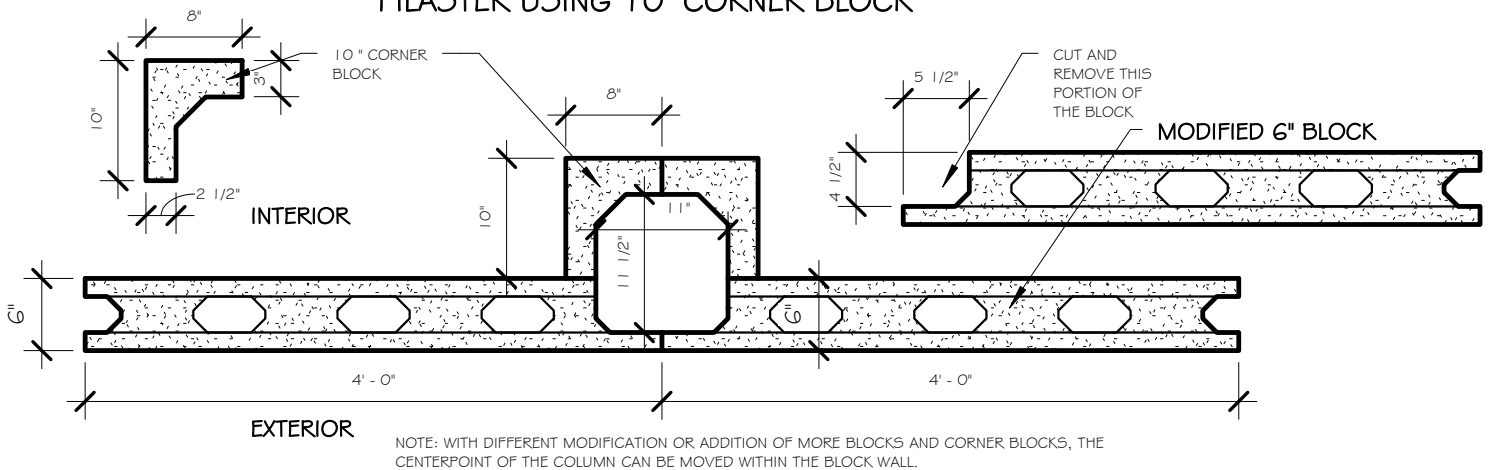
PLAN VIEW,  
6 INCH BLOCK,  
UNMODIFIED



PILASTER USING 8" CORNER BLOCK



PILASTER USING 10" CORNER BLOCK



## STRUCTURAL PILASTER DESIGN 6" ICCF BLK

SCALE: 3/4" = 1'-0"

ECO FRIENDLY BLOCK  
Research, Development,  
& Technologies

6" BLOCK  
PILASTER

CONCRETE COLUMN - 6"

Project number 2018102118-001

Date 10/21/18

Drawn by Author

Checked by Checker

A104

Scale 3/4" = 1'-0"