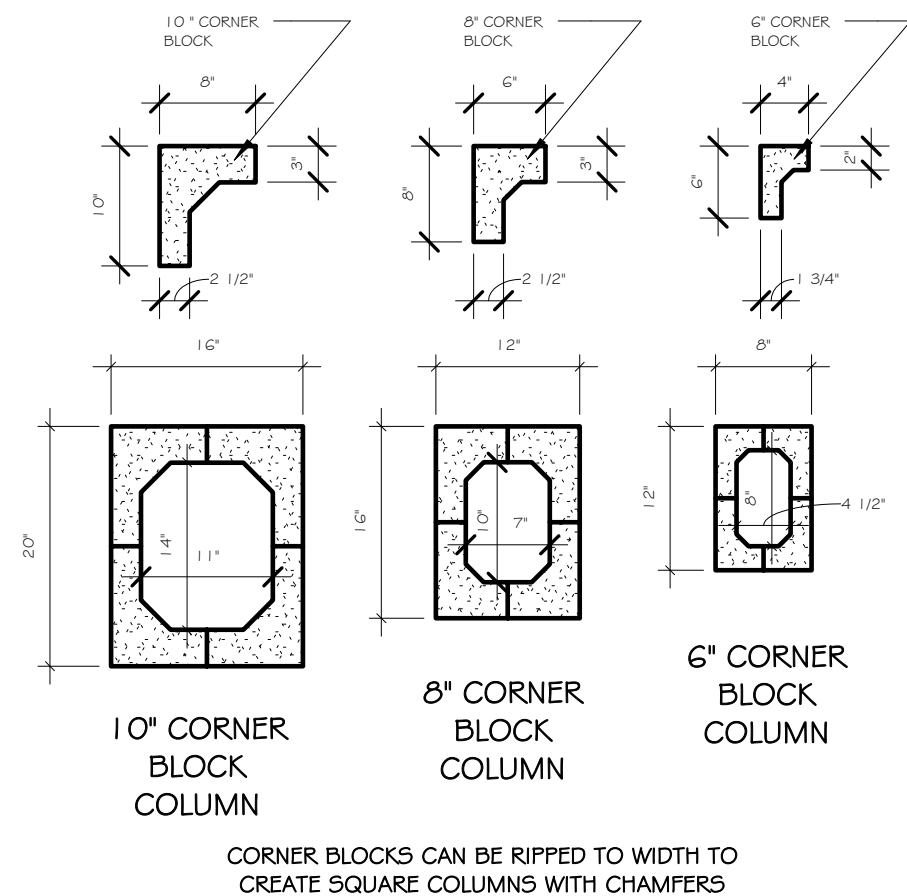


THIS IS AN INEXPENSIVE AND LABOR SAVING METHOD TO CREATE  
POURED CONCRETE COLUMNS WITHOUT COMPLEX FORMING

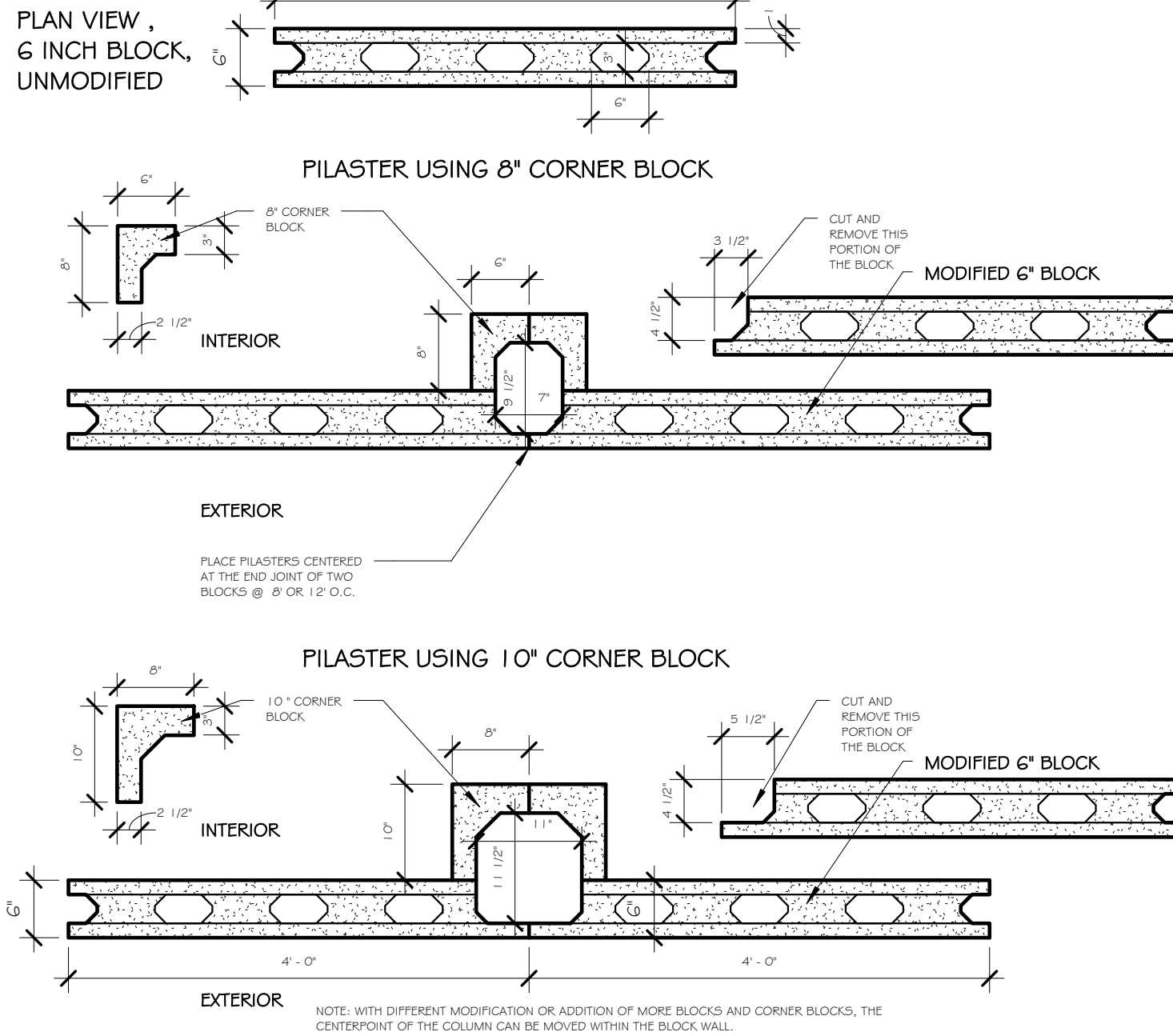
ICCF COLUMN FORMING



### STAND ALONE COLUMN FORMING W/ CORNER BLOCKS

SCALE: 3/4" = 1'-0"

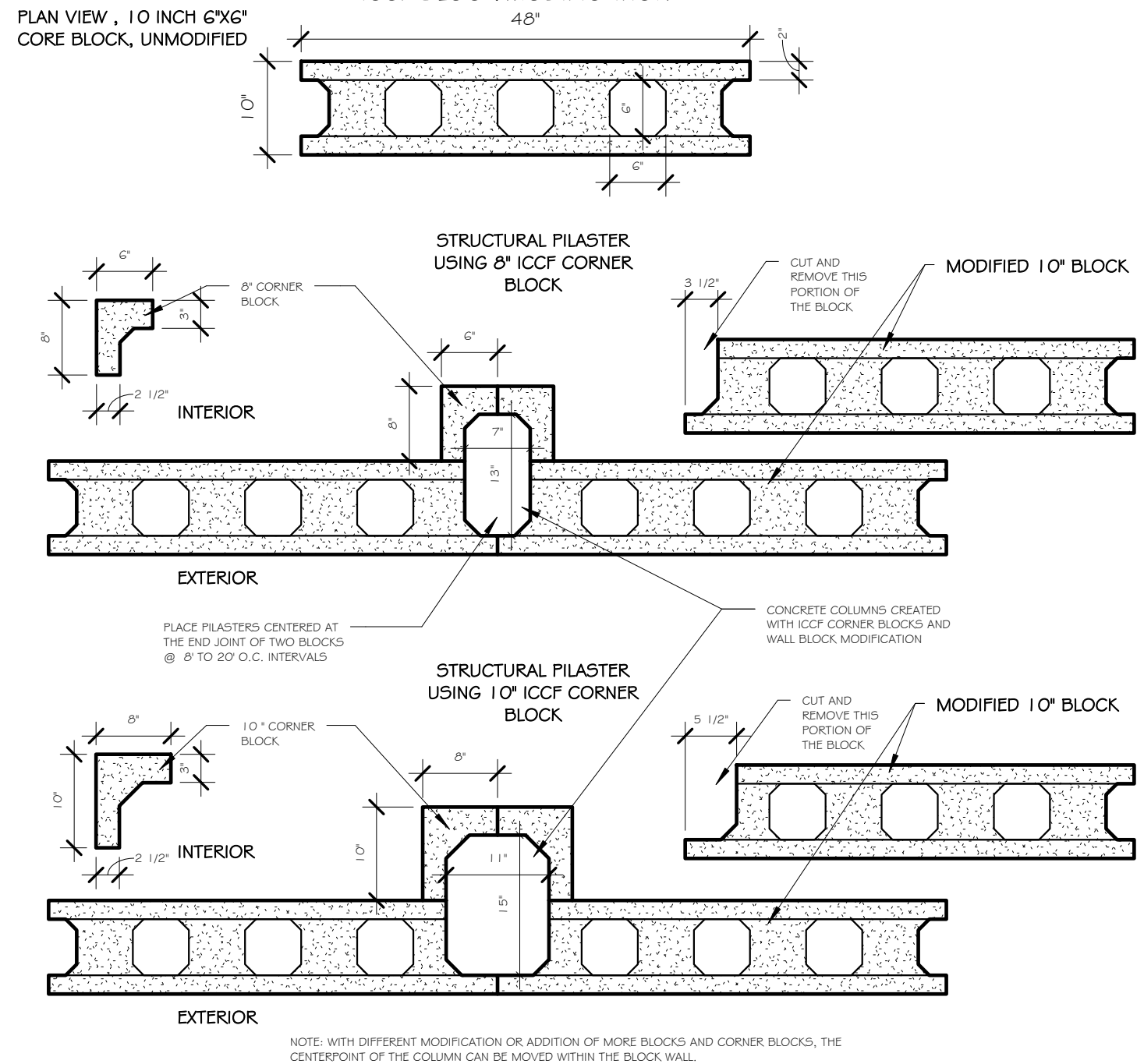
THIS IS AN INEXPENSIVE AND LABOR SAVING METHOD  
TO ENHANCE STRUCTURAL STRENGTH OF AN ICCF WALL  
BY ADDING POURED CONCRETE COLUMNS WITHOUT  
COMPLEX ICCF BLOCK MODIFICATION



### STRUCTURAL PILASTER DESIGN 6" ICCF BLK

SCALE: 3/4" = 1'-0"

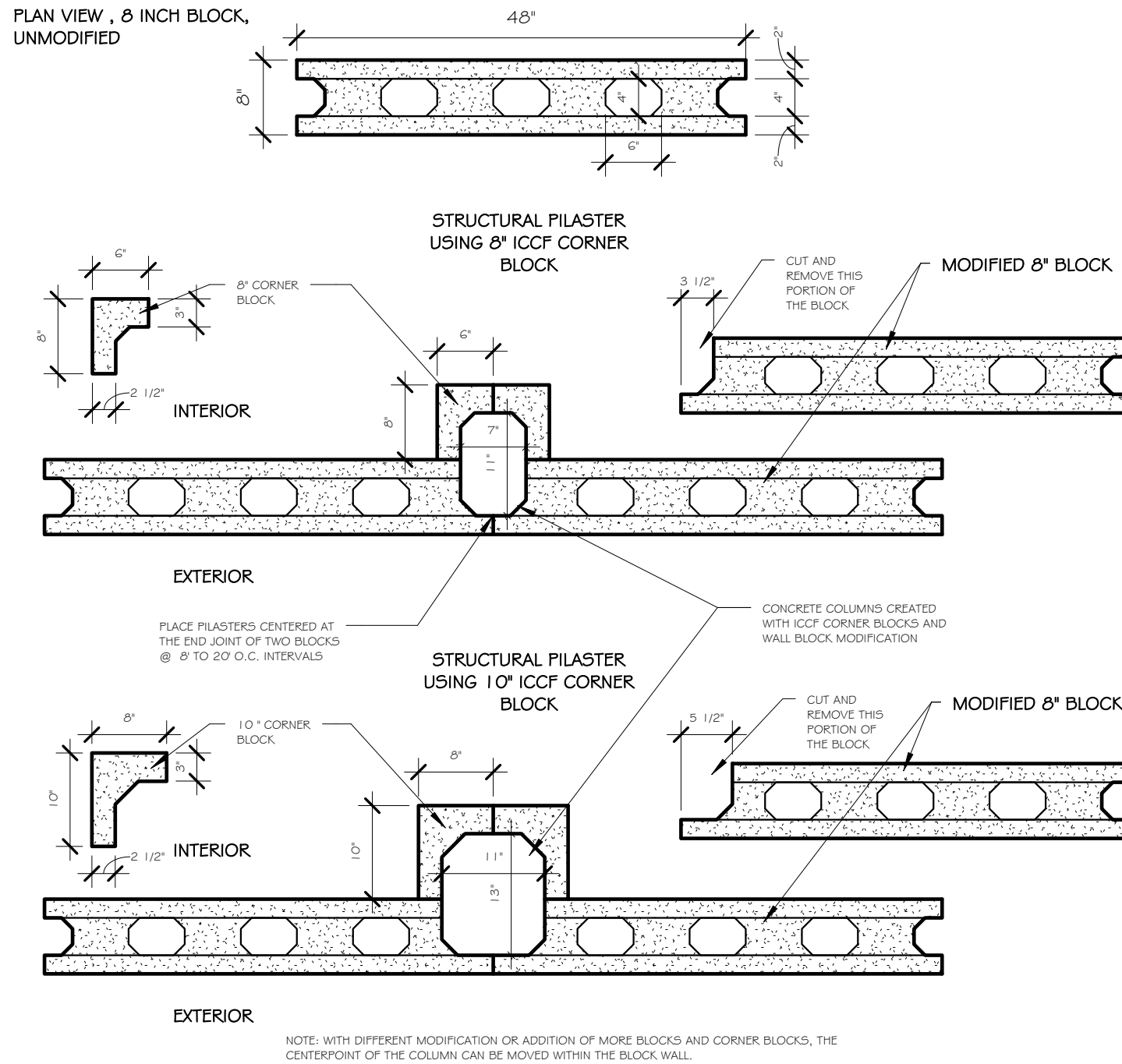
THIS IS AN INEXPENSIVE AND LABOR SAVING METHOD TO  
ENHANCE STRUCTURAL STRENGTH OF AN ICCF WALL BY  
ADDING POURED CONCRETE COLUMNS WITHOUT COMPLEX  
ICCF BLOCK MODIFICATION



### STRUCTURAL PILASTER DESIGN 10" 6"x6" ICCF BLK

SCALE: 3/4" = 1'-0"

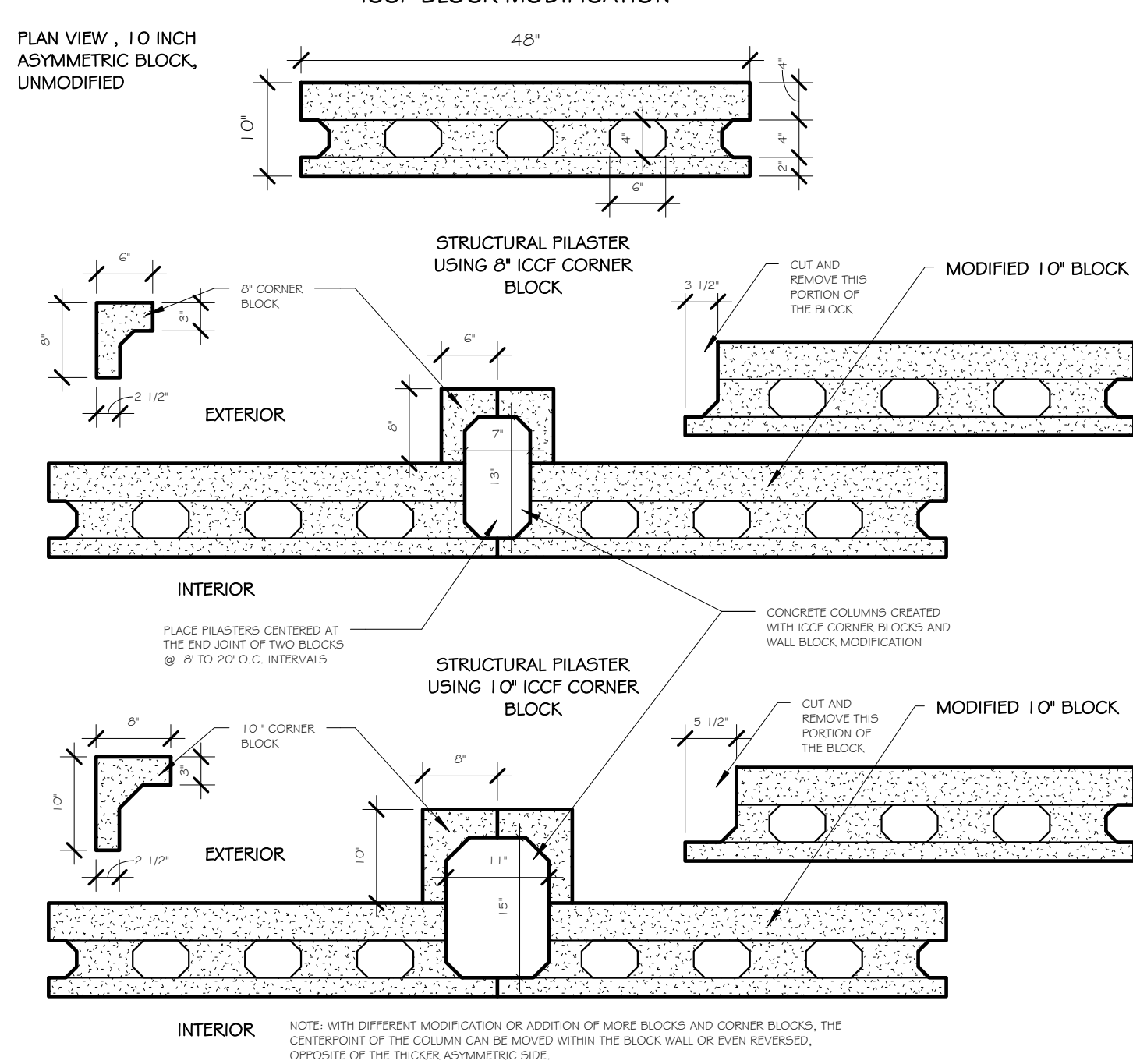
THIS IS AN INEXPENSIVE AND LABOR SAVING METHOD TO  
ENHANCE STRUCTURAL STRENGTH OF AN ICCF WALL BY  
ADDING POURED CONCRETE COLUMNS WITHOUT COMPLEX  
ICCF BLOCK MODIFICATION



### STRUCTURAL PILASTER DESIGN 8" ICCF BLK

SCALE: 3/4" = 1'-0"

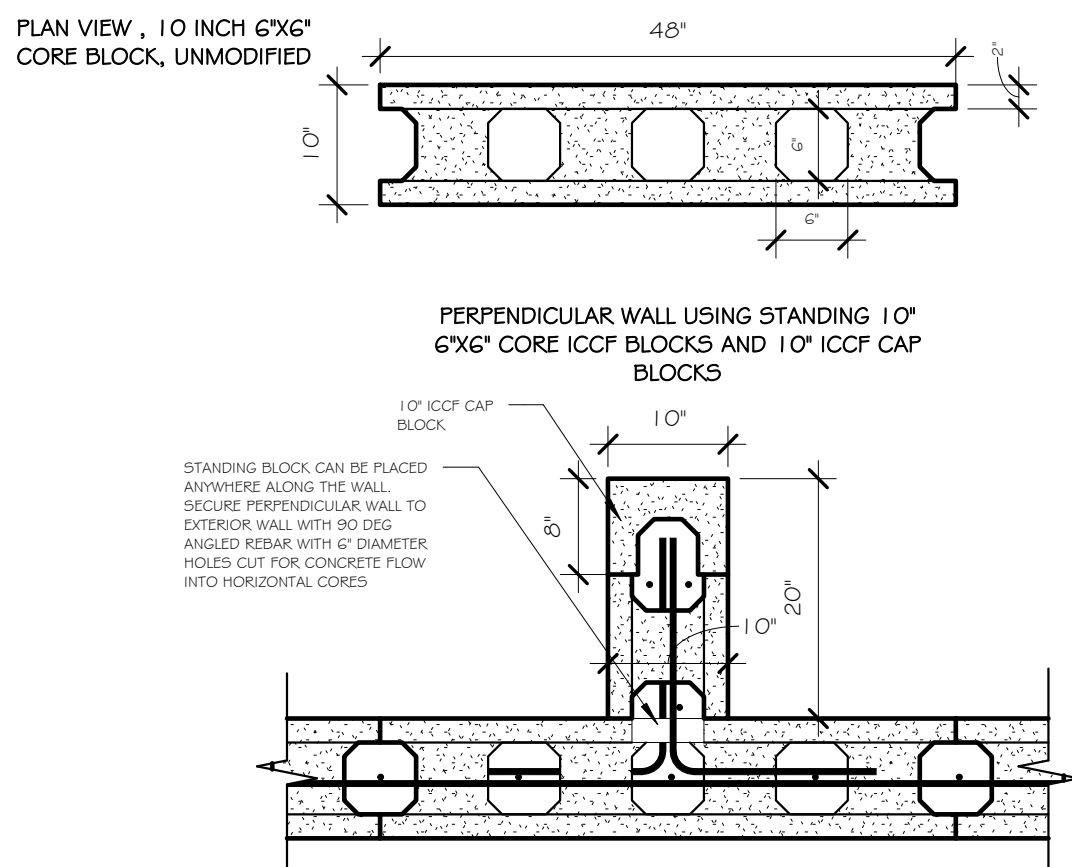
THIS IS AN INEXPENSIVE AND LABOR SAVING METHOD TO  
ENHANCE STRUCTURAL STRENGTH OF AN ICCF WALL BY  
ADDING POURED CONCRETE COLUMNS WITHOUT COMPLEX  
ICCF BLOCK MODIFICATION



### STRUCTURAL PILASTER 10" ASYMMETRIC ICCF BLK

SCALE: 3/4" = 1'-0"

THIS IS AN INEXPENSIVE AND LABOR SAVING  
METHOD TO ENHANCE STRUCTURAL STRENGTH  
OF AN ICCF WALL BY ADDING A SHORT  
PERPENDICULAR WALL WITHOUT COMPLEX ICCF  
BLOCK MODIFICATION



### STRUCTURAL PERPENDICULAR WALL DESIGN

SCALE: 3/4" = 1'-0"

CUSTOM RESIDENCE FOR:

EBS DETAIL WAREHOUSE  
CONCRETE IN-WALL COLUMNS &  
WALL STIFFENERS

REVISIONS		
NO.	DESCRIPTION	DATE
PROJECT NUMBER 2018102118-001		
DATE 10/21/18		
DESIGNED BY RET		
DRAWN BY RET		
CHECKED BY KRM		
SHEET TITLE		
WALL CONCRETE COLUMNS & STIFFENERS		
SHEET NUMBER		
CMB		
SCALE: 3/4" = 1'-0"		